

[MIG WIREFEEDERS - WELDMATIC]

WELDMATIC DRIVE ROLLERS & INLET GUIDES

TO SUIT W32, CP42, CP102, CP103, CP104, CP105, CP106, CP110, CP111, CP112, CP115, CP116 CP121-0, CP122-1

DRIVE ROLLERS

SIZE (mm)	PART NO.
0.6 / 0.8	W26-0/8
0.8 / 1.0	W26-1/8
0.9 / 1.2	W26-5/8
0.9 / 1.2 knurled	W26-9/8
1.0 / 1.2	W26-2/8
1.2 / 1.6	W26-4/8
1.0 / 1.2 aluminium	W26-3/8
1.0 / 1.2 knurled	W26-7/8
1.2 / 1.6 knurled	W26-6/8

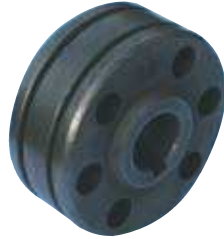
INLET GUIDES

SIZE (mm)	PART NO.
2.0 I.D.	W26-0/13



DRIVE ROLLERS TO SUIT W60 & W61 WIREFEEDERS (37mm dia)

SIZE (mm)	PART NO.
0.6 / 0.8 'V' groove	WF026
0.9 / 1.2 'V' groove	WF027
1.2 / 1.6 'V' groove	WF028
1.0 / 1.2 'U' groove	WF029
0.9 / 1.2 knurled	WF030
1.2 / 1.6 knurled	WF031



TO SUIT 4RD WIREFEEDER & CP118, CP119

DRIVE ROLLERS

SIZE (mm)	PART NO.
0.6 / 0.8 'V' groove	W51-0/5
0.8 / 1.0 'V' groove	W51-0/4
0.9 / 1.2 'V' groove	W51-0/2
1.2 / 1.6 knurled	W51-0/1
1.6 / 2.0 knurled	W51-0/7
0.9 / 1.2 aluminium	W51-0/3



NYLON INLET GUIDES (W19 FEEDERS)

SIZE (mm)	PART NO.
1.2 nylon wire guide for aluminium	MR151203

TO SUIT W17 & W35 WIREFEEDER

DRIVE ROLLERS

SIZE (mm)	PART NO.
0.8 'V' groove	W2-21
0.9 / 1.2 'V' groove	W2-22
Flat upper roller	W2-20
0.9 / 1.2 'U' groove, chromed	W2-48
1.2 / 1.6 'U' groove, chromed	W2-50
Flat upper roller, chromed	W2-49
1.2 knurled	W2-51
1.6 / 2.0 knurled	W2-24



INLET GUIDES

SIZE (mm)	PART NO.
0.8 / 1.2 brass	W2-44/12-1
1.6 / 2.0 brass	W2-44/12-2

TO SUIT W34 FOUR ROLL DRIVE

DRIVE ROLLERS

SIZE (mm)	PART NO.
0.8 / 1.0	W36-0/30
1.0 / 1.2	W36-0/31
1.6 / 2.4 knurled	W36-0/34

INLET GUIDES

SIZE (mm)	PART NO.
0.8 / 1.6 brass	W26-0/13



TO SUIT W19 & 12VS WIREFEEDER DRIVE ROLL KIT

SIZE (mm)	PART NO.
0.6 'V' groove	MR087131
0.8 'V' groove	MR079594
0.9 'V' groove	MR079595
0.9 / 1.2 'V' groove	MR190300
1.2 'V' groove	MR079596
1.6 'V' groove	MR079598
0.9 'U' groove	MR044749
1.2 'U' groove	MR079599
1.6 'U' groove	MR079601
2.0 'U' groove	MR079602
0.9 knurled 'V' groove	MR079606
1.2 knurled 'V' groove	MR079607
1.6 knurled 'V' groove	MR079609
2.0 knurled 'V' groove	MR079610
1.2 cogged 'U' groove	MR083318
1.6 cogged 'U' groove	MR079614

*Each drive roll kit includes top & bottom drive rollers & wire guide



TO SUIT W41-0 2RD WIREFEEDER

DRIVE ROLLERS

SIZE (mm)	PART NO.
1.0 / 1.2 aluminium, high speed	W51-40/3

