

UNIMIG



VIPER MULTI 195 MAX

SKU U11011



VIPER

MULTI 195 MAX

MACHINE FEATURES



Multi-Process Welding

As a three-in-one machine, the VIPER MULTI 195 MAX is capable of MIG, TIG and STICK welding. You won't need to swap between different machines anymore, making setup a breeze and saving valuable time and effort without sacrificing quality.



4.0" Colour LCD Screen

With its intuitive controls and next-generation user interface, the clear colour screen makes changing your settings easier than ever.



Power Factor Correction

Get the most out of your machine. The PFC maximises the electrical efficiency of the machine and automatically compensates for any voltage fluctuations, so you get more output power and the internal components last longer. Plus, PFC is designed to be generator friendly, so you can run this machine on a generator - we recommend an 8.5Kva minimum.



Dual Gas Input

The machine features dual gas inputs at the back, so you can have it set up to run MIG and TIG gases at the same time. Plus, they're quick connect inputs, so you can plug in and unplug whenever you need to swap bottles.

Job Memory

The job memory feature allows you to enter and store weld parameter settings under job numbers. Weld parameters can be further adjusted and stored as required. A total of 20 jobs can be memorised and stored for easy recall.

Smart Fan

The Smart Fan diminishes noise, saves power, helps reduce energy costs, and minimises the number of contaminants being pulled through the machine.

10A Plug

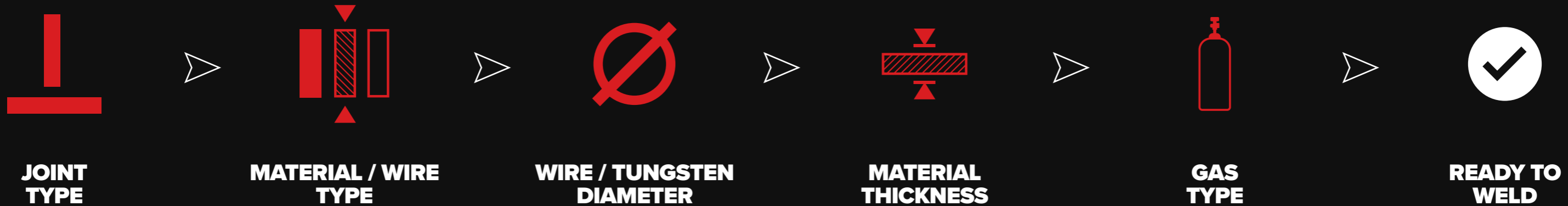
Plug in and play. The 10A power plug can be used on any domestic outlet, so it's perfect for the DIY home handyman or the professional welder looking to take it anywhere.

Lightweight & Portable

Weighing just 11.8kg, measuring in at 47x19x35cm, the VIPER MULTI 195 MAX is ready to go anywhere you need it.

SMART-SET TECHNOLOGY

This user-friendly software simplifies the setup process by asking a few questions about what you're welding, eliminating the guesswork for manual configurations. Enjoy the convenience of quickly achieving optimal welding settings without compromising on precision. The software will also provide guidance on the correct polarity to set up your machine in. Once Smart-Set is ready for welding, you have the freedom to easily fine-tune settings according to your specific preferences, giving you complete control over the process.



MIG Smart-Set [SAVE] [LOAD]

- Joint Type
- Material Type
- Gas Type
- Wire Diameter

I
142
A
CURRENT WIRE SPEED

U
18.5
V
VOLTAGE VOL-CORRECT

2.7 Thickness | 4T Trigger | 0.0 Inductance

TIG Smart-Set [SAVE] [LOAD]

- Material Type
- Joint Type
- Material Size
- Gas Type

I
124
A
CURRENT

U
0.0
V
VOLTAGE

1.6 mm | Ar 0.8 L/min | 2T | OFF

MIG FEATURES

M15 MIG Torch

Introducing the M15, a lightweight and ergonomically designed professional-grade MIG torch utilising Binzel 15 style consumables. This torch incorporates advanced polymers that enhance impact handling, improve heat insulation, and reduce overall weight. With a trigger designed to last over a million cycles and a knuckle joint at the base for easy torch positioning, the M15 ensures reduced fatigue during use without sacrificing on durability.

Adjustable Arc Start

Starting a MIG weld has never been so smooth with the Arc Start dual function. You choose just how hot or cold you want your MIG weld to start. Start hot on thicker materials or cold on thinner materials you don't want to burn through.

Crater Fill

End your welds as strong as they started. The Arc End feature ramps your welding current and voltage down at the end of a MIG weld, so it fills in at a lower amperage, eliminating craters and pinholes.

Inductance Control

Pick your preferred arc characteristics with the Inductance settings. By changing the frequency of your short circuit MIG welds with the Inductance controls, you can choose your preferred arc characteristics on every weld.

Burnback Control

Stop your wire from ever fusing with your weld or your contact tips again. Tune your burnback control to suit how much wire you want to remain sticking out from your torch when you finish a weld.

Gas Purge and Wire Feed

The VIPER MULTI 195 MAX comes equipped with Gas Purge and Quick Wire Feed functions. You can easily access these features using either a physical switch or the interface, ensuring the ultimate convenience during operation.

Fits 100mm and 200mm Wire Spools

The VIPER MULTI 195 MAX offers the flexibility to utilise both 100mm and 200mm wire spools, providing you with a wider range of options for the wires you can use in your projects. Whether you prefer the convenience of a 100mm spool for smaller jobs or the extended welding time provided by a 200mm spool for larger tasks, the choice is yours.

Spool Gun Ready

This machine is Spool Gun ready, so you can attach a Spool Gun to run softer core wires like aluminium MIG wire. You don't need to change the setup of your existing torch or drive rollers. The Spool Gun lets you quickly switch over to get any job done with no downtime.



TIG FEATURES

Flex-Head SR17 TIG Torch

TIG weld like a pro with the included professional grade SR17 TIG Torch. This torch has been engineered for trouble-free and superior performance, with any off-the-shelf size 17 consumables. Customise your torch with available plug and play remote switches, for easy amperage control right on the torch. Access hard-to-reach areas with precision and efficiency with the versatile flex-head. The ergonomically designed lightweight handle includes soft grips, and knuckle joint base for reduced fatigue and improved positioning.

DC High-Frequency TIG

Maximise your results from start to finish. A high-frequency torch can start an arc without contacting the workpiece, reducing the risk of contaminating the tungsten or the weld. It also means you get access to the entire TIG weld cycle, including pre- and post-gas and up and down slope parameters.

Pulse TIG

Minimise the heat input without compromising on any of the penetration. As well as the full weld cycle, the VIPER MULTI 195 MAX can also pulse TIG weld. Alternating between a peak and base current reduces the amount of heat input and focuses the arc, perfect for sheet metals and out-of-position welding.

Heat Control Trigger (HCT) Mode

The Heat Control Trigger Mode is great for manual heat input control as you go. It lets you set a base current, which you can switch to at any time during a weld by pressing the trigger button.

Foot Control Ready

This machine supports the connection of both a wired or wireless foot control for extra versatility and convenience while welding. You can adjust your amperage hands-free to avoid disrupting your torch movement, and the wireless option reduces cables and adds greater manoeuvrability.

Advanced Remote Mode

With the VIPER MULTI 195 MAX, enjoy unrivalled control over your remote functionality. Adjust the minimum remote start amperage to achieve precise arc ignition and gain finer control over your foot pedal or torch remote.

DIGITAL GEARED WIRE DRIVE SYSTEM

Experience unparalleled accuracy with our all-new Digital Geared Wire Drive system. This sophisticated feature is the perfect blend of technology and mechanics that ensure you achieve unprecedented precision in all your welding projects.

The digital system instantly adapts to varying welding conditions to maintain a consistent arc and wire feed speed, promising unwavering performance under any circumstances.

It's compatible with a variety of wire types and accommodates different thicknesses and materials. This allows for greater flexibility in your projects and enhances your ability to deliver high-quality welds.

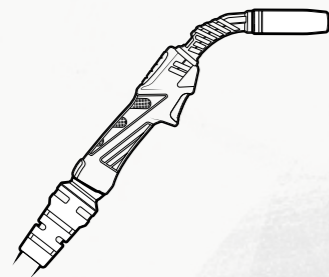


SETUP GUIDE

VIPER MULTI 195 MAX

PACKAGE CONTENTS

SPECIFICATIONS AND PERFORMANCE



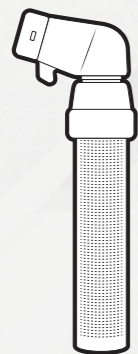
4m M15 MIG Torch



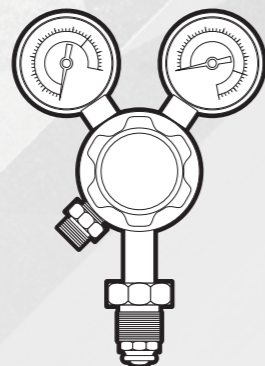
4m SR17 TIG Flex Head Torch



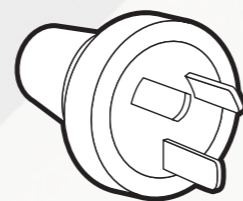
VIPER MULTI 195 MAX Power Source



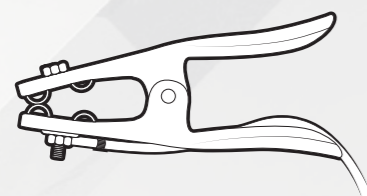
4m Electrode Holder



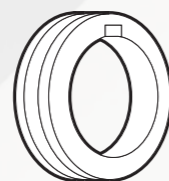
Twin Gauge Argon Regulator



10A Plug Fitted



4m 300 AMP Earth Clamp



Drive Roller

- 0.8-0.9mm "V GROOVE" 30/22
- 0.8-0.9mm "F GROOVE" 30/22
- 1.0-1.2mm "U GROOVE" 30/22

Also Included

- User Manual
- TIG Torch Starter Kit
- Quick Connect Gas Hose

Technical Data

Parameter	Values
SKU	U11011
Primary Input Voltage	240V Single Phase
Supply Plug	10 AMP
I _{eff} (a)	8.9
Rated Output (MIG)	25A/15V - 195A/23.8V
No Load Voltage (V)	67
Protection Class	IP21
Insulation Class	H
Minimum Generator (kVA)	8.5
Dinse Connector	35/50
Standard	AS/NZ60974-1
Warranty (Years)	3 (Plus 6 mo. with registration)

Size & Weight

Dimensions (mm)	470×190×350
Weight (kg)	11.8

MIG Specifications

MIG Welding Current Range	25-195A
MIG Duty Cycle @ 40°C	15% @ 195A 60% @ 98A 100% @ 76A
MIG Welding Thickness Range	1-8mm

TIG Specifications

TIG Function Type	DC High Frequency
TIG Welding Current Range	5-195A
TIG Duty Cycle @ 40°C	30% @ 195A 60% @ 138A 100% @ 107A
TIG Welding Thickness Range	1-8mm

STICK Specifications

STICK Welding Current Range	5-195A
STICK Duty Cycle @ 40°C	15% @ 195A 60% @ 98A 100% @ 76A
STICK Welding Thickness Range	2-10mm

Capable Welding Material Types By Welding Process

MIG: Mild Steel, Stainless Steel, Aluminium, Silicon Bronze **TIG:** Mild Steel, Stainless Steel, Copper, Silicon Bronze **MMA:** Mild Steel, Stainless Steel, Cast Iron

3 YEAR WARRANTY

BONUS 6 MONTH WARRANTY

Simply register your machine online at unimig.com.au

3 year warranty covers parts and labor on the power source. See unimig.com.au/warranty-terms/ for full warranty details.

We are proud to offer superior repair services across Australia with our strategically placed service centres in Sydney, Melbourne, Brisbane, and Perth. Each of our service centres is equipped with a dedicated team of highly skilled and trained technicians. These professionals are specialised in troubleshooting, diagnosing, and repairing our welding machines, ensuring that they perform at their best.

ACCESSORIES



WIRELESS FOOT PEDAL
U51009

Struggling with difficult materials? Adjust your amperage remotely without disrupting your torch movement for a perfect weld, every time. This wireless pedal is specifically designed to complement the VIPER MULTI 195 MAX, enabling exceptional TIG welding performance even on challenging welds.



APEX TIG TORCH KIT
U42009

Enhance your SR17 TIG torch with the all-inclusive APEX Series kit. This kit offers a wide range of cup sizes (10 to 19), including clear quartz options for unrivalled visibility. These cups allow for increased tungsten stick out while providing superior gas coverage. Additionally, the kit includes various backcap sizes, ensuring seamless welding even in hard-to-reach areas.



RARE EARTH TUNGSTEN
PTR0005-16 / PTR0005-24

For optimal TIG performance with the VIPER MULTI 195 MAX, we suggest utilising 1.6-2.4mm Rare Earth Tungstens. These high-performance, long-life tungstens offer seamless arc ignition, smooth arc transfer, and a minimal burn-off rate. With their versatility, they are well-suited for nearly all projects that you can undertake using the 195 MAX.



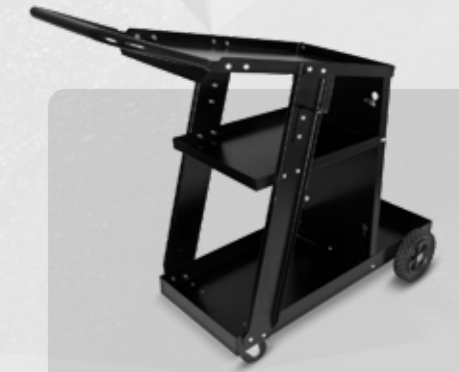
220A SPOOL GUN
U41017

The Binzel style 220 AMP Spool Gun has been engineered to run softer core wires like aluminium. You don't need to change the setup of your existing torch or drive rollers. The Spool Gun lets you quickly switch over to get any job done with no downtime. It also features a potentiometer knob for changing wire speed right on the torch.



MIG STARTER KIT SIZE 15
UMSK15

This comprehensive starter kit comes packaged in a robust carry case, making it ideal to be bundled alongside the VIPER MULTI 195 MAX. This kit contains all the essential consumables, ensuring you have the crucial parts your torch needs in one convenient case. Minimise downtime and keep your welding process running smoothly.



MACHINE TROLLEY
UMJRTROLLEY2

Our trolley is ideal if you are tired of moving your welding and gas gear around the workshop manually. With easy setup, the small machine trolley can perfectly fit your setup, while also holding a D or E size gas cylinder on the back. Crafted from robust metal and protected by a durable powder coating, this trolley is designed to be easily manoeuvrable and built to last.

VIPER RANGE 10 AMP SINGLE PHASE

ARC 140
KUMJRVA140



STICK



TIG

Scratch Start Ignition

MULTI 135
U11005K



MIG



TIG



STICK

Synergic (Gas + Gasless)

Lift Arc Ignition

VRD

MULTI 165
U11006K



MIG



TIG



STICK

Synergic + Manual (Gas + Gasless)

Lift Arc Ignition

VRD

MULTI 185
KUMJRV185



MIG



TIG



STICK

Geared Wire Drive Spool Gun Ready (Gas + Gasless)

Lift Arc Ignition

VRD

180 AC/DC MKII
U12001K



TIG



STICK

AC & DC TIG High Freq. Start Pulse TIG Foot Pedal Ready

VRD

CUT 30 MKII
U14005K



PLASMA

Pilot Arc Start Perforated Cut 2T/4T Trigger Air Test CNC Ready Severance Cuts up to 14mm Steel

UNIMIG

B U I L T F O R W E L D E R S

unimig.com.au

f@v @UNIMIG

HEAD OFFICE:

112 Christina Rd,
Villawood NSW 2163

PH: (02) 9780 4200
FAX: (02) 9780 4210

EMAIL: sales@unimig.com.au

QLD OFFICE:

19 Commerce Cct,
Yatala QLD 4207

PH: (07) 3333 2855
FAX: (07) 3274 5829

EMAIL: qld@unimig.com.au

VIC OFFICE:

91 Yellowbox Drive,
Craigieburn VIC 3064

PH: (03) 8682 9911
FAX: (03) 9333 7867

EMAIL: sales@unimig.com.au

WA OFFICE:

26 Sustainable Ave,
Bibra Lake WA 6163

PH: (08) 6363 5111
FAX: (08) 9417 4781

EMAIL: wasales@unimig.com.au