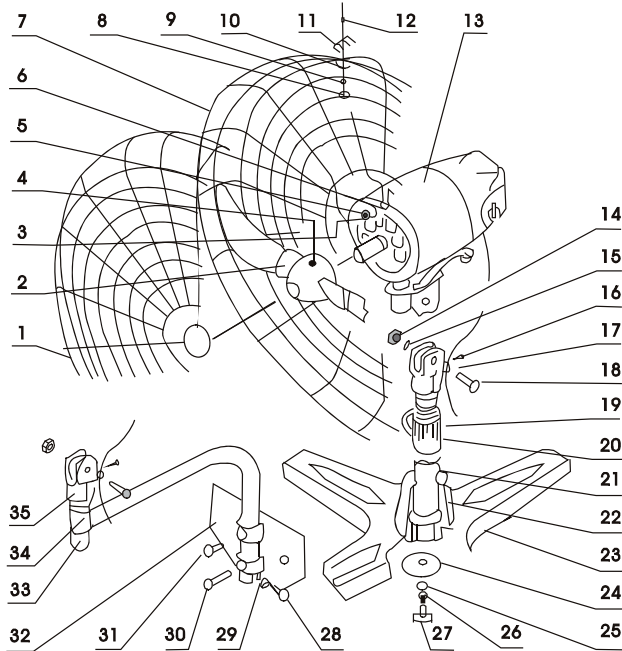
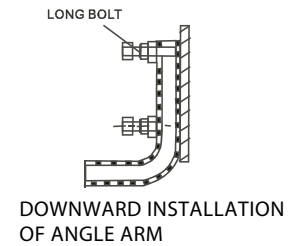
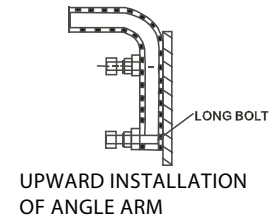
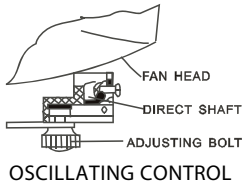


# ASSEMBLING DIAGRAM



- |                  |                      |
|------------------|----------------------|
| 1. FRONT GUARD   | 18. BOLT             |
| 2. BLADE         | 19. FIXING COVER     |
| 3. SCREW         | 20. FIXING SCREW     |
| 4. BOLT          | 21. SUPPORT          |
| 5. SPRING WASHER | 22. DECORATING COVER |
| 6. WASHER        | 23. PEDESTAL         |
| 7. BACK GUARD    | 24. WASHER           |
| 8. NUT           | 25. WASHER           |
| 9. SPRING WASHER | 26. SPRING WASHER    |
| 10. GUARD CLIP   | 27. BOLT             |
| 11. GUARD CLIP   | 28. BOLT             |
| 12. SCREW        | 29. NUT              |
| 13. MOTOR        | 30. BOLT             |
| 14. NUT          | 31. BOLT             |
| 15. WASHER       | 32. WALL PLATE       |
| 16. SCREW        | 33. SUPPORT ARM      |
| 17. WIRING CLIP  | 34. FIXING SCREW     |
|                  | 35. LOWER CONNECTION |

## PEDESTAL FAN ASSEMBLING ORDER

21→23→24→25→26→27→22  
 →19→20→13→18→15→14→7  
 →6→5→4→2→3→1→10→11  
 →12→9→8→17→16

## WALL MOUNT FAN ASSEMBLING ORDER

35→33→34→32→30→31→29  
 →28→13→18→15→14→7→6  
 →5→4→2→3→1→10→11→12  
 →9→8→17→16



# INDUSTRIAL WORKSHOP FANS



TPF24	24" / 600mm PEDESTAL FAN
TPF30	30" / 750mm PEDESTAL FAN
TWF30	30" / 750mm WALL MOUNT FAN



READ CAREFULLY AND UNDERSTAND THESE INSTRUCTIONS BEFORE USE.

## Limited Warranty

Industrial Tool & Machinery Sales (hereinafter referred to as ITMS) will, within twelve (12) months from the original date of purchase, repair or replace any goods found to be defective in materials or workmanship.

This warranty is void if the item has been damaged by accident, neglect, improper service or other causes not arising out of defects in materials or workmanship. This warranty does not apply to machines and/or components which have been altered, changed, or modified in any way, or subjected to overloading or use beyond recommended capacities and specifications. Worn componentry due to normal wear and tear is not a warranty claim. Goods returned defective shall be returned prepaid freight to ITMS or agreed repair agent, which shall be the buyer's sole and exclusive remedy for defective goods. ITMS accepts no additional liability pursuant to this guarantee for the costs of travelling or transportation of the product or parts to and from ITMS or the service agent or dealer, such costs are not included in this warranty. The manufacturer reserves the right to make improvements and modifications to design without prior notice.

**1.** If an electrical fault is detected or the power supply cord is damaged, the device must be sent to a licenced electrician for repair.

**2.** Guard against electric shock, avoid body contact with earthed or grounded surfaces eg. pipes, air con, refrigerators etc. Never operate the device in rain or wet conditions, or if the tool has been exposed to rain or wet conditions.

**3.** Power source; ensure that the power source to be used conforms to the power requirements specified on the name plate. Ensure the power supply plug matches the outlet. Never modify the plug or use adaptors.

**4.** Do not abuse the power cord. Never use the cord for carrying, pulling or unplugging the device. Keep cord away from heat, oil, sharp edges or moving parts. Damaged or entangled cords increase the risk of electric shock.

**5.** Extension cord; when using an extension cord ensure sufficient thickness and rated capacity.

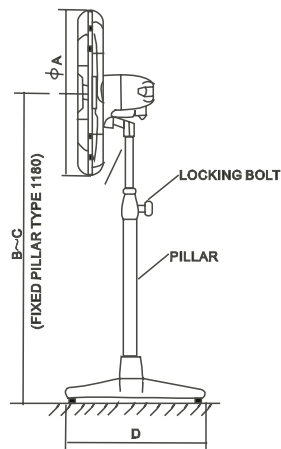
**6.** The Trademaster fan is suitable for cooling in factories, warehouses, workshops and industrial work areas. It is not designed for domestic use.

## Technical Specifications

Part #	Phase	Voltage	Power
TPF24	1	220-240v	160w
TPF30	1	220-240v	280w
TWF30	1	220-240v	280w

## Installation Dimensions

Spec	Φ	B - C	D
TPF24	654mm	1235-1760mm	600mm
TPF30	824mm	1235-1760mm	700mm
TWF30	824mm	-	-



**PEDESTAL TYPE**

## Operating Procedures

**1. Oscillating control;** The oscillating structure is shown in the drawing. When the oscillate arm is secured to the centre bolt hole, the fan will not oscillate. When oscillate arm is moved to the off-centre bolt hole, the fan will oscillate 90 degrees. Always ensure the power is turned off before making any oscillating adjustments

**5. Fan Direction;** To change the direction of the fan, turn off the power, loosen the direction-changing bolt, adjust the direction of the fan head and tighten the bolt. It is not necessary to move the base of the fan.

**6. Upward and downward tilt adjustment;** Turn off the power, hold the head of the fan, loosen the connecting bolt and stopping bolt, adjust the fan to satisfactory position and tighten up the two bolts. 19mm Spanner required ( not supplied )

**7. Head Height Adjustment(pedestal type only);** Turn off the power. Loosen the locking bolt, adjust the fan head to ideal position and then tighten up the locking bolt. In order to avoid the fan head falling down suddenly, the fan head must be held when the locking bolt is being loosened.

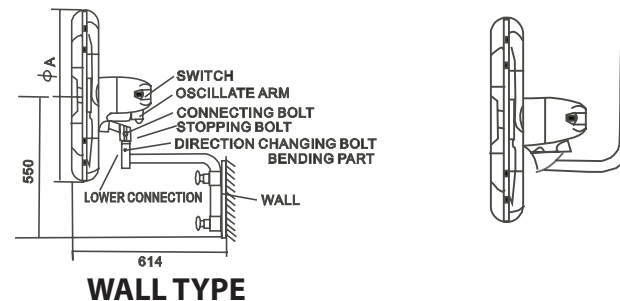
**8. Installation of the wall fan base;** The angle arm of the fan can be installed facing upwards or downwards. In both cases, the longer of the two locking bolts must be inserted through the small hole at the end of the angle arm in order to avoid falling off.

**9. Speed Adjustment;** The fan incorporates 3 speed settings which are controlled by the switch on the back of the fan head. "0" represents stop. "1" is the lowest blade speed setting, "3" is the highest.

## Maintenance

**1. Grease change;** After the fan is operated over 2000 hours (or at least once a year), the grease in the gearbox and bearing should be changed.

**2. Care;** If the fan is not used for extended periods, it should be cleaned and put into a dry place.



**WALL TYPE**