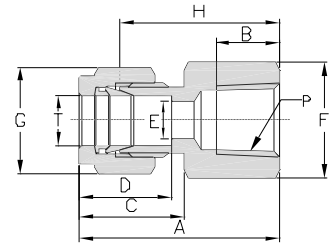


## Female Connectors

GENLOK to Female NPT Thread



### ENGLISH UNITS

Model Number	T Tube O.D. in.	P NPT Male Pipe Size in.	A in.	B in.	C in.	D in.	E in.	F Hex Flat in.	G Hex Flat in.	H in.
SS-FC-TF2-FNT2	1/8	1/8	1.13	0.41	0.60	0.50	0.09	9/16	7/16	0.87
SS-FC-TF2-FNT4	1/8	1/4	1.32	0.59	0.60	0.50	0.09	3/4	7/16	1.06
SS-FC-TF3-FNT2	3/16*	1/8	1.17	0.39	0.63	0.54	0.12	9/16	1/2	0.91
SS-FC-TF4-FNT2	1/4	1/8	1.23	0.39	0.70	0.60	0.19	9/16	9/16	0.94
SS-FC-TF4-FNT4	1/4	1/4	1.41	0.59	0.70	0.60	0.19	3/4	9/16	1.12
SS-FC-TF4-FNT6	1/4	3/8	1.48	0.59	0.70	0.60	0.19	7/8	9/16	1.19
SS-FC-TF4-FNT8	1/4	1/2	1.67	0.78	0.70	0.60	0.19	1-1/16	9/16	1.38
SS-FC-TF5-FNT2	5/16*	1/8	1.26	0.39	0.73	0.64	0.25	9/16	5/8	0.97
SS-FC-TF5-FNT4	5/16*	1/4	1.45	0.59	0.73	0.64	0.25	3/4	5/8	1.16
SS-FC-TF6-FNT2	3/8	1/8	1.29	0.39	0.76	0.66	0.28	5/8	11/16	1.00
SS-FC-TF6-FNT4	3/8	1/4	1.48	0.59	0.76	0.66	0.28	3/4	11/16	1.19
SS-FC-TF6-FNT6	3/8	3/8	1.54	0.59	0.76	0.66	0.28	7/8	11/16	1.25
SS-FC-TF6-FNT8	3/8	1/2	1.73	0.78	0.76	0.66	0.28	1-1/16	11/16	1.44
SS-FC-TF6-FNT12	3/8	3/4	1.88	0.81	0.76	0.66	0.28	1-5/16	11/16	1.59
SS-FC-TF8-FNT4	1/2	1/4	1.59	0.59	0.86	0.90	0.41	13/16	7/8	1.19
SS-FC-TF8-FNT6	1/2	3/8	1.65	0.59	0.86	0.90	0.41	7/8	7/8	1.25
SS-FC-TF8-FNT8	1/2	1/2	1.84	0.78	0.86	0.90	0.41	1-1/16	7/8	1.44
SS-FC-TF8-FNT12	1/2	3/4	1.90	0.81	0.86	0.90	0.41	1-5/16	7/8	1.50
SS-FC-TF10-FNT6	5/8*	3/8	1.65	0.59	0.86	0.96	0.50	15/16	1	1.25
SS-FC-TF10-FNT8	5/8*	1/2	1.84	0.78	0.86	0.96	0.50	1-1/16	1	1.44
SS-FC-TF12-FNT8	3/4	1/2	1.84	0.78	0.86	0.96	0.62	1-1/16	1-1/8	1.44
SS-FC-TF12-FNT12	3/4	3/4	1.90	0.81	0.86	0.96	0.62	1-5/16	1-1/8	1.50
SS-FC-TF16-FNT12	1	3/4	2.10	0.81	1.04	1.23	0.88	1-3/8	1-1/2	1.62
SS-FC-TF16-FNT16	1	1	2.45	1.00	1.04	1.23	0.88	1-5/8	1-1/2	1.97

Model Number	T Tube O.D. in.	P Tapered Pipe Thread (ISO PT)	A in.	B in.	C in.	D in.	E in.	F Hex Flat in.	G Hex Flat in.	H in.
SS-FC-TF2-FRT2	1/8	1/8	1.13	0.41	0.60	0.50	0.09	9/16	7/16	0.87
SS-FC-TF2-FRT4	1/8	1/4	1.32	0.59	0.60	0.50	0.09	3/4	7/16	1.06
SS-FC-TF4-FRT2	1/4	1/8	1.23	0.39	0.70	0.60	0.19	9/16	9/16	0.94
SS-FC-TF4-FRT4	1/4	1/4	1.41	0.59	0.70	0.60	0.19	3/4	9/16	1.12
SS-FC-TF4-FRT6	1/4	3/8	1.48	0.59	0.70	0.60	0.19	7/8	9/16	1.19
SS-FC-TF6-FRT4	3/8	1/4	1.48	0.59	0.76	0.66	0.28	3/4	11/16	1.19
SS-FC-TF6-FRT6	3/8	3/8	1.54	0.59	0.76	0.66	0.28	7/8	11/16	1.25
SS-FC-TF6-FRT8	3/8	1/2	1.73	0.78	0.76	0.66	0.28	1-1/16	11/16	1.44
SS-FC-TF8-FRT6	1/2	3/8	1.65	0.59	0.86	0.90	0.41	7/8	7/8	1.25
SS-FC-TF8-FRT8	1/2	1/2	1.84	0.78	0.86	0.90	0.41	1-1/16	7/8	1.44

\*: Consult factory

## Female Connectors

### METRIC UNITS

Model Number	T Tube O.D. mm	P NPT Male Pipe Size in.	A mm	B mm	C mm	D mm	E mm	F Hex Flat mm	G Hex Flat mm	H mm
SS-FC-TF3M-FNT2	3	1/8	28.7	10.4	15.3	12.9	2.4	14	12	22.1
SS-FC-TF3M-FNT4	3	1/4	33.5	15.0	15.3	12.9	2.4	19	12	26.9
SS-FC-TF6M-FNT2	6	1/8	31.3	10.4	17.7	15.3	4.8	14	14	23.9
SS-FC-TF6M-FNT4	6	1/4	35.8	15.0	17.7	15.3	4.8	19	14	28.4
SS-FC-TF6M-FNT6	6	3/8	37.6	15.0	17.7	15.3	4.8	22	14	30.2
SS-FC-TF6M-FNT8	6	1/2	42.5	19.8	17.7	15.3	4.8	27	14	35.1
SS-FC-TF8M-FNT2	8	1/8	32.1	10.4	18.6	16.2	6.4	15	16	24.6
SS-FC-TF8M-FNT4	8	1/4	37.0	15.0	18.6	16.2	6.4	19	16	29.5
SS-FC-TF8M-FNT6	8	3/8	38.5	15.0	18.6	16.2	6.4	22	16	31.0
SS-FC-TF8M-FNT8	8	1/2	43.3	19.8	18.6	16.2	6.4	27	16	35.8
SS-FC-TF10M-FNT4	10	1/4	37.8	15.0	19.5	17.2	7.9	19	19	30.2
SS-FC-TF10M-FNT6	10	3/8	39.4	15.0	19.5	17.2	7.9	22	19	31.8
SS-FC-TF10M-FNT8	10	1/2	44.2	19.8	19.5	17.2	7.9	27	19	36.6
SS-FC-TF12M-FNT4	12	1/4	40.3	15.0	22.0	22.8	9.5	22	22	30.2
SS-FC-TF12M-FNT6	12	3/8	41.9	15.0	22.0	22.8	9.5	22	22	31.8
SS-FC-TF12M-FNT8	12	1/2	46.7	19.8	22.0	22.8	9.5	27	22	36.6

Model Number	T Tube O.D. mm	P Tapered Pipe Thread (ISO PT)	A mm	B mm	C mm	D mm	E mm	F Hex Flat mm	G Hex Flat mm	H mm
SS-FC-TF3M-FRT2	3	1/8	28.7	10.4	15.3	12.9	2.4	14	12	22.1
SS-FC-TF3M-FRT4	3	1/4	33.5	15.0	15.3	12.9	2.4	19	12	26.9
SS-FC-TF6M-FRT4	6	1/4	35.8	15.0	17.7	15.3	4.8	19	14	28.4
SS-FC-TF6M-FRT6	6	3/8	37.6	15.0	17.7	15.3	4.8	22	14	30.2
SS-FC-TF8M-FRT4	8	1/4	37.0	15.0	18.6	16.2	6.4	19	16	29.5
SS-FC-TF8M-FRT6	8	3/8	38.5	15.0	18.6	16.2	6.4	22	16	31.0
SS-FC-TF8M-FRT8	8	1/2	43.3	19.8	18.6	16.2	6.4	27	16	35.8