

PLASMA CUTTING TORCHES

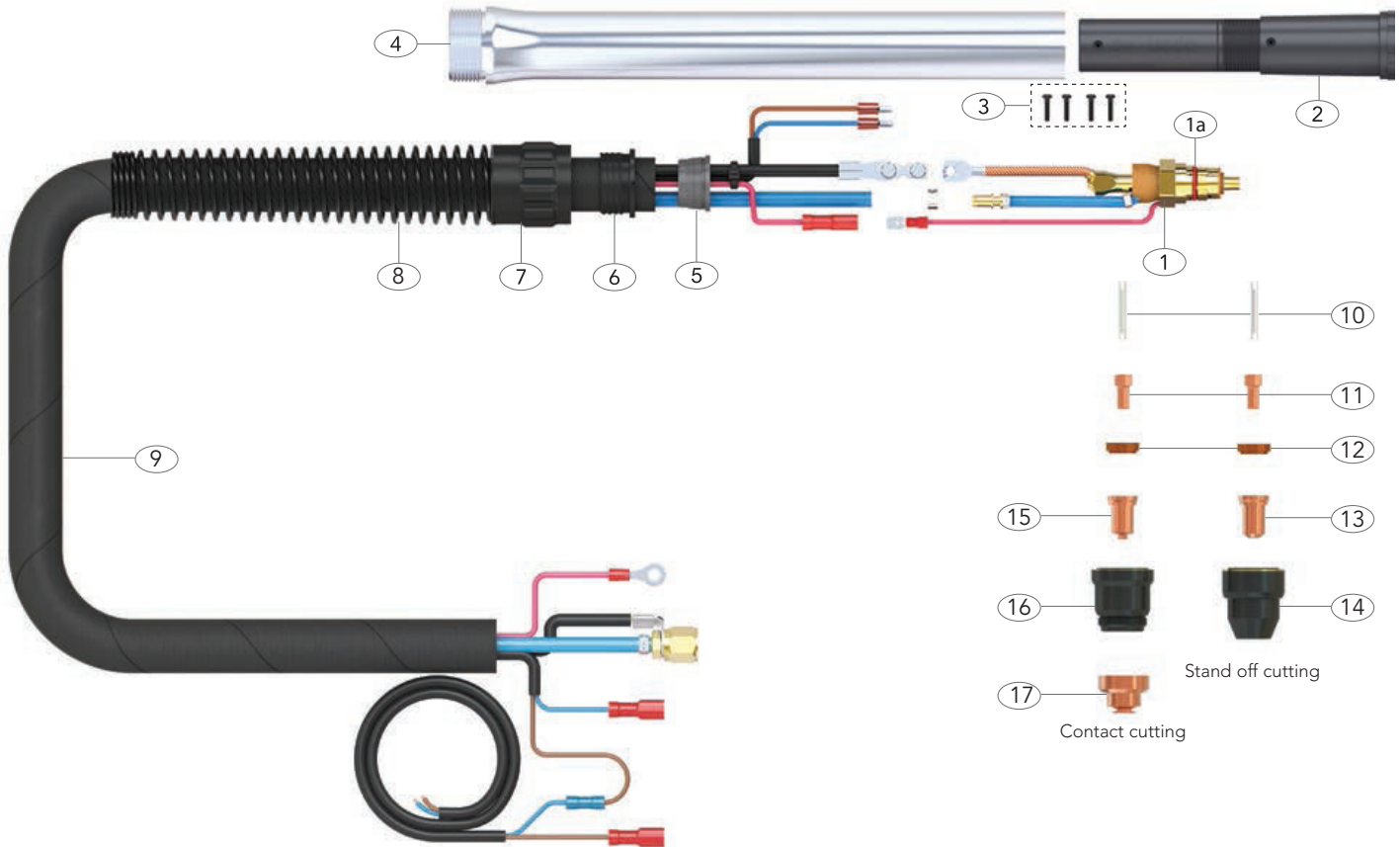
SCM80R Plasma Torch & Spares

Air Cooled 80 Amp



Rating: 80A Air/N₂ Gas, @ 60% duty cycle.

For use on KUPJRRW45 - KUPJRRW80



Torch Model			
Description	Part Number	6Mt	10Mt
Surecut™ Plasma Cutting Torch Package	SCM80R-40-CF5	SCM80R-60-CF5	SCM80R-100-CF5

Front end consumables

Torch Spare Parts			Wear Spare Parts		
No	WGA Part No.	Description	No	WGA Part No.	Description
1	SCM8001	SCMP80 180 Torch Head Kit	10	SC8002	Cooling Tube
1a	SC2508	'O' Ring	11	SC8004	Electrode
2	SC8118	Auto Torch Head Housing	12	SC8006	Swirl Ring
3	SCSP1-1	Screw Pack	13	SC8020-10	Cutting Tip 1.0mm 40-50A
4	SC8110	Auto Handle		SC8020-13	Cutting Tip 1.3mm 70-80A
5	SC8010	Plasma Plastic Insert	14	SC8030	Retaining Cup
6	UB8110A	Auto Handle Insert	15	SC8026-10	Cutting Tip Contact 1.0mm
7	UB8030A	Auto Handle Lock Nut		SC8026-11	Cutting Tip Contact 1.1mm
8	UBL8017A	Auto Handle Spring		SC8026-12	Cutting Tip Contact 1.2mm
9	SC8119C-40	Cable Assembly Complete X 4mt		SC8026-13	Cutting Tip Contact 1.3mm
	SC8119C-60	Cable Assembly Complete X 6mt	16	SC8031	Shield Cap Body
	SC8119C-100	Cable Assembly Complete X 10mt	17	SC8041	Shield Cap