



Air Hydraulic Riveter

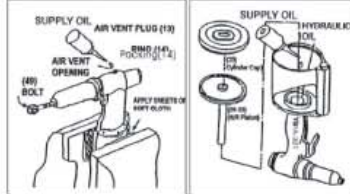
Item No : PA-301



● The consumable parts ▲ The replacement parts ★ The non-replacement parts

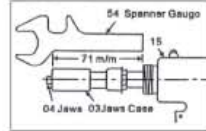
ENERGY SAVING TYPE

ADDING OIL METHOD (一) (二)



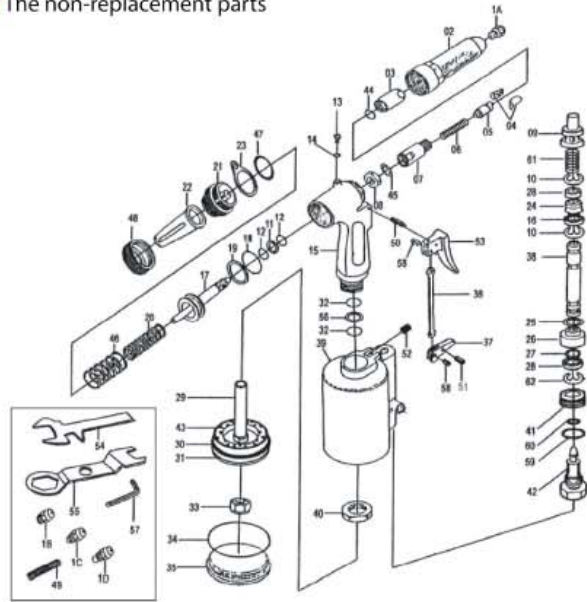
● The consumable parts
▲ The replacement parts
★ The non-replacement parts

ADJUSTING LENGTH



SPECIFICATIONS:

Traction Power : 2303 lb.-f (1045 kg.-f)
Stroke Length : 16mm
Capacity : 4.8 mm
Air Pressure : 5.5-6 bar (78-85 PSI)
Avg. Air Consumption : 1.48 Liter/stroke
Air Inlet : 1/4" PT (NPT)
Weight : 3.307 LBS (1.5 kg)



Part List PA-301

NO.	INDEX NO.	DESCRIPTION	Q'TY
●	1A	PA-301P1A Rivet Nose 4.8mm(3/16")	1
●	1B	PA-301P1B Rivet Nose 4.0mm(5/32")	1
●	1C	PA-301P1C Rivet Nose 3.2mm(1/8")	1
●	1D	PA-301P1D Rivet Nose 2.4mm(3/32")	1
★	02	PA-301P02 Front Housing	1
●	03	PA-301P03 Jaw Housing	1
●	04	PA-301T04 Jaw (2 pcs)	1 set
●	05	PA-301P05 Jaw Pusher	1
●	06	PA-301P06 Jaw Case Spring	1
★	07	PA-301P07 Jaw Housing Coupler	1
★	08	PA-301P08 Lock Nut	1
★	09	PA-301P09 Throttle pusher	1
▲	10	PA-301T10 Lock Ring (2 pcs)	1 set
▲	11	PA-301P11 Back Up Ring	1
▲	12	PA-301T12 O-Ring (2 pcs)	1 set
★	13	PA-301P13 Hydraulic Oil Inlet Plug	1
★	14	PA-301P14 Sealing Ring	1
★	15	PA-301P15 Plunger Housing	1
★	16	PA-301P16 Collar	1
★	17	PA-301P17 Hydraulic Plunger	1
▲	18	PA-301P18 O-Ring	1
★	19	PA-301P19 Back-Up Ring	1
★	20	PA-301P20 Return Spring (Small)	1
★	21	PA-301P21 Rear Gland	1
★	22	PA-301P22 Collecting Tube	1
★	23	PA-301P23 Hanger Ring	1
★	24	PA-301P24 Sealing Ring	1
▲	25	PA-301P25 O-Ring	1
★	26	PA-301P26 Valve Seat	1
▲	27	PA-301P27 O-Ring	1
★	28	PA-301T28 Washer (2 pcs)	1 set
★	29	PA-301P29 Piston Rod	1
▲	30	PA-301P30 O-Ring	1
★	31	PA-301P31 Air Piston	1
▲	32	PA-301T32 O-Ring (2 pcs)	1 set
★	33	PA-301P33 Lock Nut	1
▲	34	PA-301P34 O Ring	1
★	35	PA-301P35 Cylinder Cap	1
★	36	PA-301P36 Linkage	1
★	37	PA-301P37 Rocker Lever	1
★	38	PA-301P38 Valve Stem	1
★	39	PA-301P39 Air Cylinder	1
★	40	PA-301P40 Lock Nut	1
★	41	PA-301P41 Nipple Screw	1
★	42	PA-301P42 Valve Plug	1
★	43	PA-301P43 Rubber Cushion	1
▲	44	PA-301P44 O-Ring	1
★	45	PA-301P45 Washer	1

NO.	INDEX NO.	DESCRIPTION	Q'TY
★	46	PA-301P46 Return Spring (Big)	1
★	47	PA-301P47 O-Ring	1
★	48	PA-301P48 Lock Nut	1
★	49	PA-301P49 Bolt Plug	1
★	50	PA-301P50 Pin	1
★	51	PA-301P51 Spring Pin	1
★	52	PA-301P52 Lock Screw	1
★	53	PA-301P53 Trigger (Long)	1
★	54	PA-301P54 Multi-Wrench (A)	1
★	55	PA-301P55 Multi-Wrench (B)	1
★	56	PA-301P56 Back Up Ring	1
★	57	PA-301P57 Hex Wrench	1
★	58	PA-301T58 Spring Pin (2 pcs)	1 set
▲	59	PA-301P59 O-Ring	1
▲	60	PA-301P60 Sealing Ring	1
★	61	PA-301P61 Spring	1
▲	62	PA-301P62 Lock Ring	1