

# KINCROME TRADECENTRE

## MOBILE SERVICE TROLLEY 6 Drawer 300mm **K7369**

### OPERATION MANUAL



#### IMPORTANT:

This operating manual contains important safety information, read carefully & understand all information before operating the trolley. Save this manual for future use.



Do not open more than one drawer at a time.



Do not step on drawers.



Do not let children near the Toolbox.



Do not separate Chest from Trolley.



Do not exceed Drawer Load Limit



Not suitable for mounting in Vehicles



Set the brake on the locking castors unless you are moving the Toolbox.



Lock drawers and lid before moving the Toolbox.



### PARTS LIST



#### MEASUREMENTS:

**WEIGHT: 37 KG**

WIDTH	298 mm	DEPTH	461 mm	HEIGHT	967 mm
-------	--------	-------	--------	--------	--------

#### TOP TRAY:

WIDTH	294 mm	DEPTH	455 mm	HEIGHT	49 mm
-------	--------	-------	--------	--------	-------

#### SMALL DRAWER:

WIDTH	249 mm	DEPTH	439 mm	HEIGHT	85 mm
-------	--------	-------	--------	--------	-------

#### LARGE DRAWER:

WIDTH	249 mm	DEPTH	439 mm	HEIGHT	180 mm
-------	--------	-------	--------	--------	--------

**WORK SURFACE RATING: 20KG**

**DRAWER RATING: 10KG (PER DRAWER)**

**CASTOR RATING: 200KG (4 PIECES)**

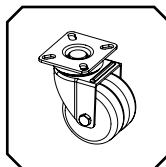
### INCLUDED:



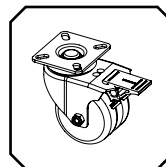
Keys x 2



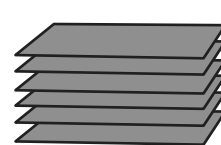
12mm x 25 Bolts for Castors



Dual Wheel Swivel Castors (2)



Dual Wheel Swivel Castors Locking (2)



6 x Drawer Liners

**TOOLS & ASSISTANCE REQUIRED FOR TROLLEY:**



2 People



For Castors:  
12mm Spanner

## MOBILE SERVICE TROLLEY

6 Drawer  
300mm

K7369

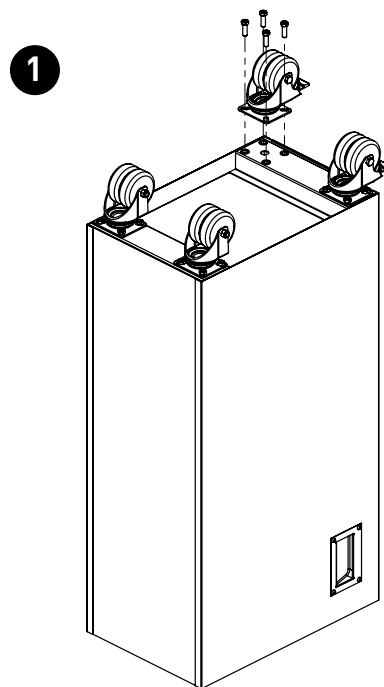
### ASSEMBLY INSTRUCTIONS

#### 1 Castor Installing (If applicable)

- Be sure remove the trays and make sure the door is locked and lay the trolley upside down.
- Secure castors to the unit using the 12mm bolts provided.
- Tighten with a 12mm Spanner.
- Repeat this process for the castors on the opposite of the trolley.
- Return the trolley to its upright position.

**Caution:** Do not over tighten the bolts.

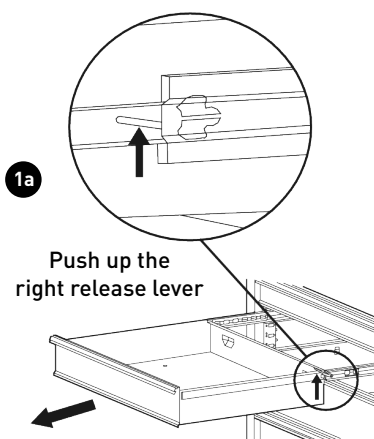
**Caution:** Both locking castors must be fitted to front of trolley.



### MAINTENANCE

#### 1 Removing the Drawers

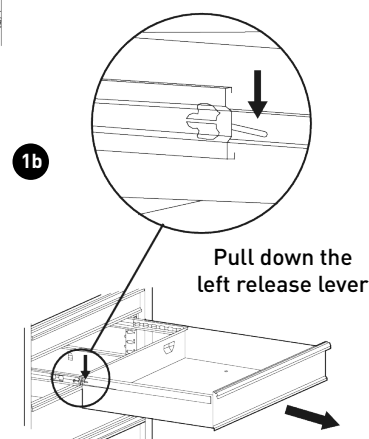
- Fully extend the empty drawer.
- Push up the right release lever while pushing down the left release lever.
- Pull the drawer outward until it is released from the drawer slide.



Push up the  
right release lever

#### 2 Re-Inserting The Drawers

- Extend the drawer slides.
- Insert the brackets on each side of the drawer into the slots on the slides, being careful that they are properly positioned.
- Once properly inserted, completely close the drawer to set the slides in their proper positions.



Pull down the  
left release lever

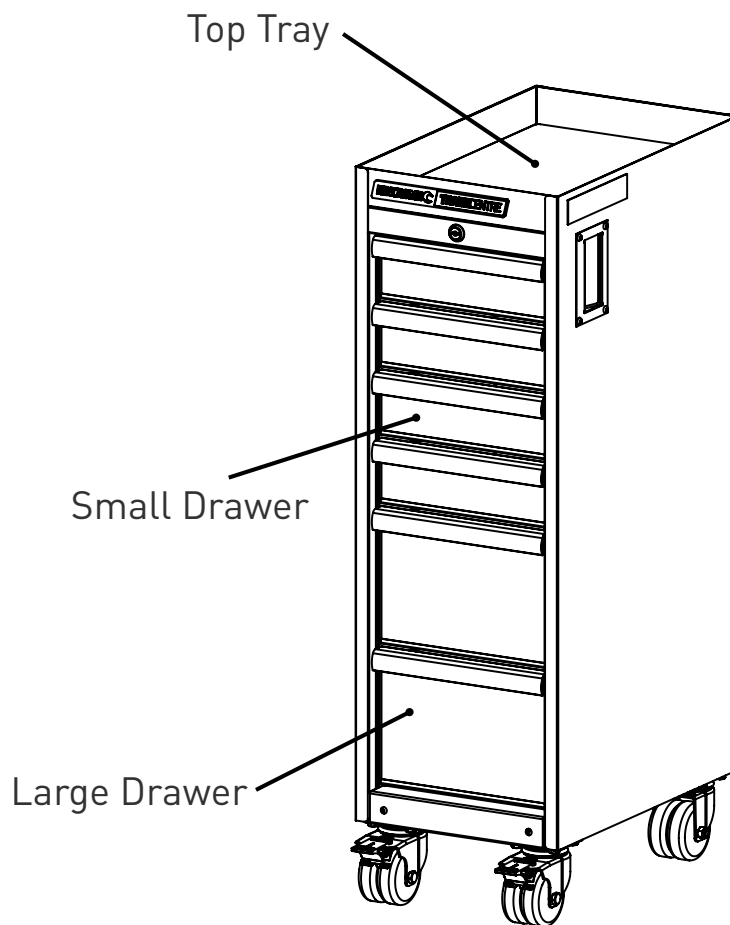
- Periodically tighten all hardware
- Periodically lubricate castors
- Lubricate the slides twice a year
- Lubricate the lock with graphite annually
- Use a damp Microfibre cloth to clean all surfaces
- Use stainless steel cleaner, to clean stainless steel surfaces

## MOBILE SERVICE TROLLEY

6 Drawer  
300mm

**K7369**

### TECHINICAL SPECIFICATIONS



#### TOP TRAY:

<b>WIDTH</b>	294 mm	<b>DEPTH</b>	455 mm	<b>HEIGHT</b>	49 mm
--------------	--------	--------------	--------	---------------	-------

#### SMALL DRAWER:

<b>WIDTH</b>	249 mm	<b>DEPTH</b>	439 mm	<b>HEIGHT</b>	85 mm
--------------	--------	--------------	--------	---------------	-------

#### LARGE DRAWER:

<b>WIDTH</b>	249 mm	<b>DEPTH</b>	439 mm	<b>HEIGHT</b>	180 mm
--------------	--------	--------------	--------	---------------	--------

# KINCROME TRADECENTRE

## MOBILE SERVICE TROLLEY

6 Drawer  
300mm **K7369**

### PARTS LIST



### SPARE PARTS

ITEM	PART NO.	DESCRIPTION	QUANTITY
1	K7369-1	Lock & Key	1
2	K7369-2	Key Only (Specify Number)	1
3	K7367-8	Side Handle	2
4	K7368-3	Stainless Steel Top	1
5	K7368-4	Castor Pack (4)	1
6	K7368-5	Castor Bolt & Washer Pack	1

ITEM	PART NO.	DESCRIPTION	QUANTITY
7	K7368-6	Stainless Steel Kick Panel	1
8	K7367-3	Ball Bearing Slide Pair (Shallow)	6
9	K7369-3	EVA Liner Pack	6
10	K7366-11	Trade Centre Badge	1
11	K7399	T/Centre Matched Key Pack (10)	1

**National Head Office**  
National Distribution and Showroom  
3 Lakeview Dve, Caribbean Business Park  
Scoresby Victoria 3179 Australia  
ABN 41 007 185 006

**Administration**  
T (03) 9730 7100 F (03) 9730 7199  
E [enquiries@kincrome.com.au](mailto:enquiries@kincrome.com.au)  
W [kincrome.com.au](http://kincrome.com.au)

**Customer Service Centre**  
T 1300 657 528 F 1300 556 005



Made to Kincrome Tools & Equipment Pty Ltd global specifications and quality standards in China

**Australia & Global**  
[www.kincrome.com.au](http://www.kincrome.com.au)  
[enquiries@kincromecom.au](mailto:enquiries@kincromecom.au)