

KINCROME TRADECENTRE

ROLLER DOOR WALL CABINET

2 Shelf
520mm

K7365

OPERATION MANUAL



IMPORTANT:

This operating manual contains important safety information, read carefully & understand all information before operating the wall cabinet. Save this manual for future use.



Do not open more than one drawer at a time.



Do not step on drawers.



Do not let children near the Toolbox.



Do not separate Chest from Trolley.



Do not exceed Drawer Load Limit.



Not suitable for mounting in Vehicles.



Lock drawers and lid before moving the Toolbox.



PARTS LIST



MEASUREMENTS:

WEIGHT: 13 KG

WIDTH	520 mm	DEPTH	160 mm	HEIGHT	930 mm
--------------	--------	--------------	--------	---------------	--------

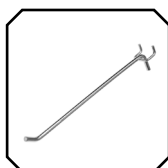
LOAD RATING: 7KG (PER SHELF)

NOTE: Use appropriate/additional mounting hardware depending on material surface you are mounting the wall cabinet too.

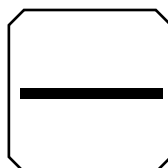
INCLUDED:



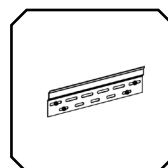
Keys x 2



Hooks x 20



Shelf x 2



Wall Mount Bracket x 2

**TOOLS & ASSISTANCE
REQUIRED FOR CABINET:**



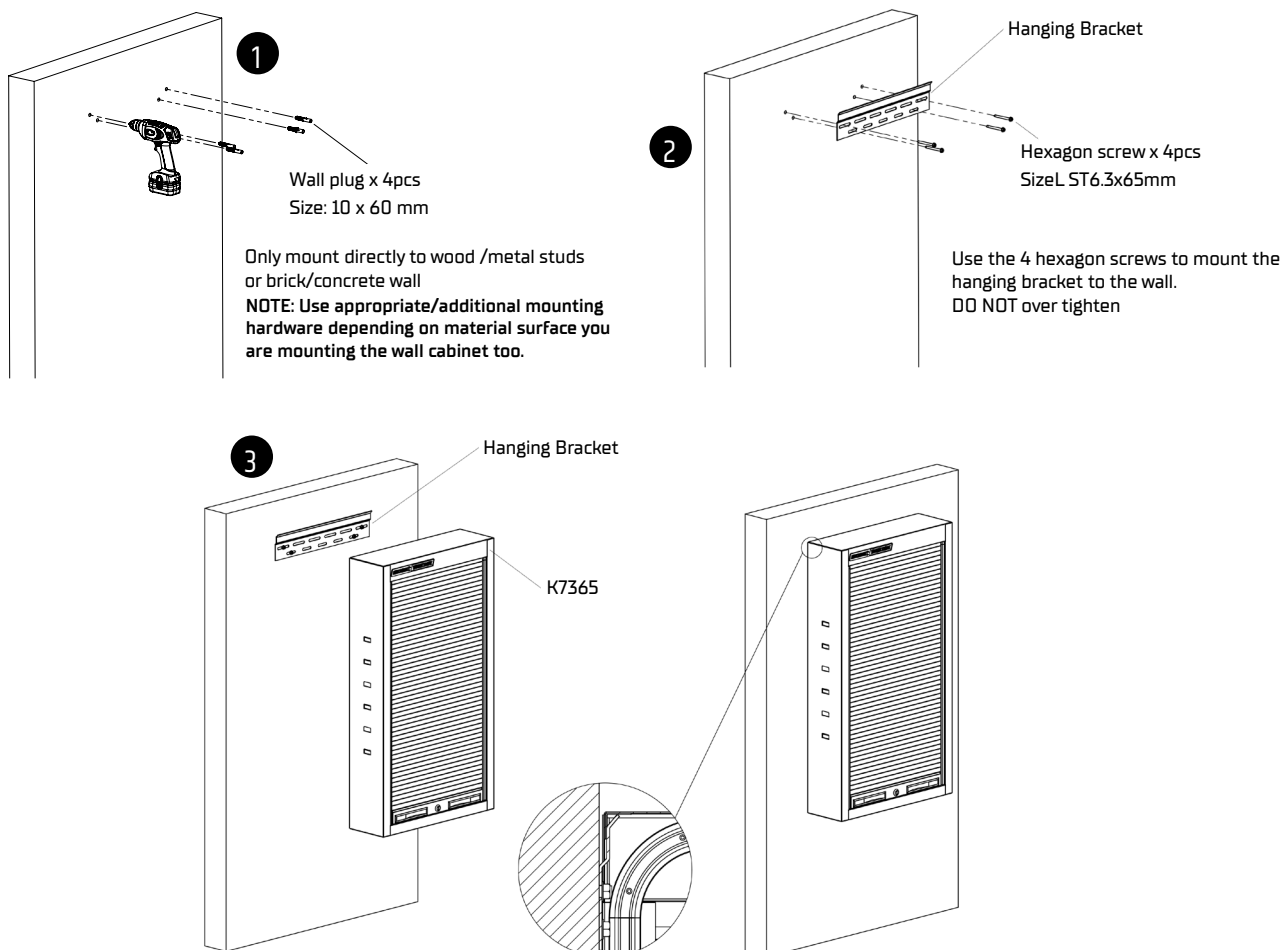
2
People

ROLLER DOOR WALL CABINET

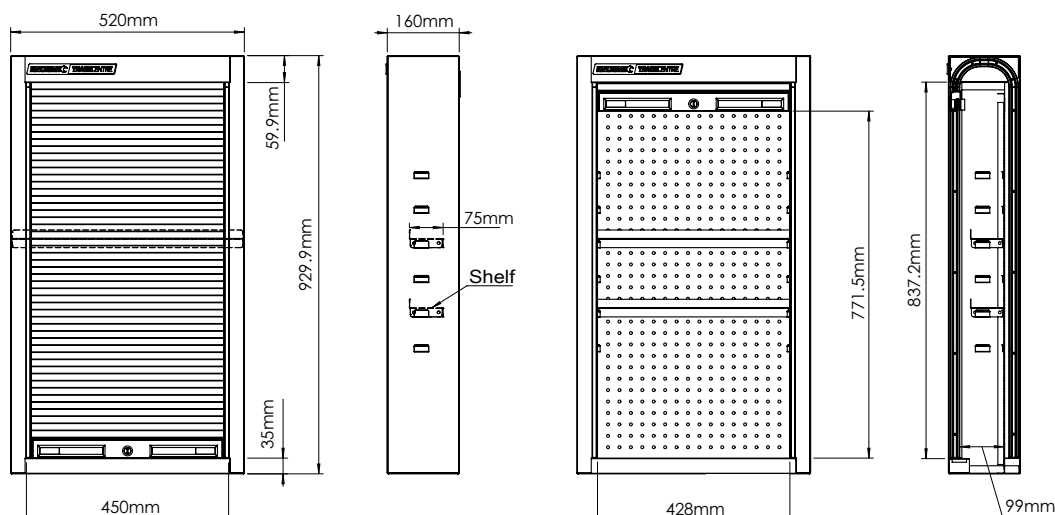
2 Shelf
520mm

K7365

ASSEMBLY INSTRUCTIONS



TECHNICAL SPECIFICATIONS



ROLLER DOOR WALL CABINET

2 Shelf
520mm **K7365**

PARTS LIST



SPARE PARTS

ITEM	PART NO.	DESCRIPTION	QUANTITY
1	K7365-1	Lock & Key	1
2	K7365-2	Key Only (Specify No)	1
3	K7365-3	Wall Bracket	1
4	K7365-4	Hook Pack (20 Piece)	1
5	K7365-5	Shelf	2

ITEM	PART NO.	DESCRIPTION	QUANTITY
6	K7366-11	Trade Centre Badge	1

National Head Office
National Distribution and Showroom
3 Lakeview Dve, Caribbean Business Park
Scoresby Victoria 3179 Australia
ABN 41 007 185 006

Administration
T (03) 9730 7100 F (03) 9730 7199
E enquiries@kincrome.com.au
W kincrome.com.au

Customer Service Centre
T 1300 657 528 F 1300 556 005

Made to Kincrome Tools & Equipment Pty Ltd global specifications and quality standards in China



A family
owned
Australian
business

Australia & Global
www.kincrome.com.au
enquiries@kincrome.com.au