

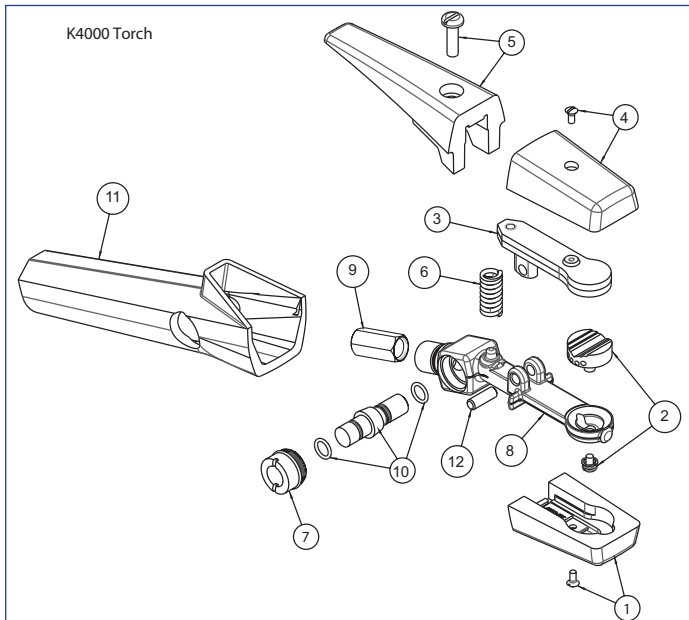
K4000 ARC AIR GOUGING TORCH

Part-No **Description**
 K4000 K4000 Arc Air Gouging Torch

Electrode Size: Round - 4.0mm - 12.7mm
 Flat - 15.9mm

Air Requirement: 80 PSI - 5.6 KG/CM²
 25 CFM - 708 L/MIN

Applications: Heavy Duty - Heavy metal removal applications
 such as weld preparations in pressure vessel shops
 and shipyards



Spare Parts

Part Number	Description
1	94-433-183 K4000 Insulator
2	94-378-368 K4000 Head and Screw
3	94-048-088 K4000 Upper Arm
4	94-433-183 K4000 Insulator
5	94-476-066 K4000 Press Lever Insulator with Screw
6	94-800-007 K4000 Spring
7	94-104-016 K4000 Valve Bonnet
8	94-103-206 K4000 Torch Body Arm
9	94-170-182 K4000 Connector
10	94-801-011 K4000 Spool Assembly with O-rings
11	94-370-163 K4000 Handle
12	94-632-092 K4000 Hinge Pin