



EL SERIES

OWNER'S TECHNICAL MANUAL

G10040N 18V Lithium-ion Cordless Grease Gun

Description

The Alemlube EL Series G10040N 18V Lithium-ion cordless grease gun takes the hard work out of greasing. A must for any busy workshop, the Alemlube EL Series G10040N can dispense up to twelve 450 gram cartridges of grease using the 3000 mAh battery before recharging or battery changeover.

It is advisable not to recharge the 1500 mAh battery for longer than 75 minutes, or the 3000 mAh battery for longer than 150 minutes, otherwise damage to the battery and /or charger may occur.

Weighing in at 4kg, the Alemlube EL Series G10040N features a 106cm long grease gun flex, a heavy duty coupler and can work continuously for 25 minutes.

The Alemlube EL Series G10040N 18V Lithium-ion cordless grease gun goes anywhere, securely contained in the convenient carry case, delivering high volume, high pressure trouble-free greasing.

PRODUCT SPECIFICATIONS

Charger Input Power	230~240 Vac/60HZ
Battery Output Power	18Vdc
Battery Capacity	1500 mAh / 3000 mAh
Battery Charge Time	1500 /75min 3000 /150min
Maximum Operating Pressure	10,000±1000PSI
Grease Reservoir Capacity	450 grams
Maximum Flow rate (g/minute)	90±10
Hose Pressure rating	18,000 PSI
Weight	4kg



SAFETY INSTRUCTIONS

Failure to follow all instructions listed below may result in electric shock, fire, and / or serious injury. Please read carefully.

WORK AREA

1. Keep your work area clean and well lit. Cluttered benches and dull areas may cause accidents.
2. Do not operate power tools in explosive atmospheres such as in the presence of flammable liquids, gases, or dust. Power tools create sparks that may ignite the materials.
3. Keep bystanders, children, and visitors away while operating a power tool. Distractions can lead you to lose control.

ELECTRICAL SAFETY

1. Avoid body contact with grounded surfaces such as pipes & couplers. There is an increased risk of electric shock if your body is grounded.
2. Do not expose power tools to rain or wet conditions. Water entering a power tool will increase the risk of electric shock.



NSW
TEL: (02) 9939 0711
FAX: (02) 9939 0411

QLD/PNG
TEL: (07) 3204 9166
FAX: (07) 3204 1224

VIC/TAS
TEL: (03) 8787 8288
FAX: (03) 8787 8266

WA
TEL: (08) 9209 3066
FAX: (08) 9209 3933

SA/NT
TEL: (08) 8241 7111
FAX: (08) 8241 7011

NZ
TEL: (09) 447 1007
FAX: (09) 447 1008



EL SERIES

OWNER'S TECHNICAL MANUAL

G10040N 18V Lithium-ion Cordless Grease Gun

PERSONAL SAFETY

1. Stay alert. Watch what you are doing, and use common sense when operating a power tool. Do not use a power tool while tired or under the influence of drugs, alcohol, or medication. A moment of inattention while operating power tools may result in serious personal injury.
2. Dress properly. Do not wear loose clothing or jewelry. Contain long hair. Keep your hair, clothing, and gloves away from moving parts. Loose clothes, jewelry, or long hair can be caught in moving parts.
3. Avoid accidental starting. Be sure the Switch is released before plugging in. Carrying power tools with your finger on the Trigger, or plugging in power tools with the Trigger depressed, invites accidents.
4. Remove adjusting keys or wrenches before turning the power tool on. A wrench or a key that is left attached to a rotating part of the power tools may result in personal injury.
5. Do not overreach. Keep proper footing and balance at all times. Proper balance enables better control of the power tool in unexpected situations.
6. Use safety equipment. Always wear ANSI approved safety glasses underneath a full face safety shield. Dust mask, non-skid safety shoes, hard hat, or hearing protection must be used for appropriate conditions.

WARNING

Do not use battery charger in damp or wet locations. Do not use the grease gun or Charger if it has been dropped, damaged, left outdoors, or immersed in liquid. To avoid electrical shock, do not handle the charger, its power cord plug, or the Grease Gun with wet hands.

WARNING

Grease gun can develop high pressure – up to 10,000 PSI. Use safety glasses and gloves for protection during operation. Keep hands clear of the exposed rubber portion of hose.

WARNING

Extreme pressure may cause nozzle extension or whip hose to burst. Use only APPROVED hoses and follow whip hose instructions and warnings.

UNPACKING

When unpacking, check to make sure all the parts shown on the Parts List are included.

SAVE THIS MANUAL

You will need this manual for the safety warnings and precautions, assembly, operating, maintenance and cleaning procedures, parts list and assembly diagram.

NSW
TEL: (02) 9939 0711
FAX: (02) 9939 0411

QLD/PNG
TEL: (07) 3204 9166
FAX: (07) 3204 1224

VIC/TAS
TEL: (03) 8787 8288
FAX: (03) 8787 8266

WA
TEL: (08) 9209 3066
FAX: (08) 9209 3933

SA/NT
TEL: (08) 8241 7111
FAX: (08) 8241 7011

NZ
TEL: (09) 447 1007
FAX: (09) 447 1008

Charger Operation G10040N

18V Lithium-ion Cordless Grease Gun

Charging the Battery General

CHARGER OPERATION

Before using Grease Gun for the first time, the battery pack should be charged for 2 hours. If the battery is installed in the gun, remove it by depress the one battery release button (on the back of battery) and pull battery pack out of gun.

As a battery approaches the discharged state, you will notice a sharp drop in tool performance. When the tool is unable to perform the task at hand, it is time to recharge the battery. Recharging the battery before this condition is reached will reduce the total work life of the battery. Discharging the battery beyond this point can damage the battery.



NOTE: Battery temperature will increase during and shortly after use. Batteries may not accept a full charge if they are charged immediately after use. Allow the battery to cool to room temperature before charging for best results. When the battery requires recharging, a 1-hour charge allows the tool to operate at full power. Do not recharge the battery longer than 1 hour, as damage to the battery and/or charger will occur. Insert the battery into the charging socket of the charger. Then, plug the charger into the nearest 230 volt, grounded, electrical outlet.

CAUTION:

Vent slots in top and bottom of charger must not be obstructed.
Do not charge battery when temperature is **BELOW** 0°C or **ABOVE** 40°C.

NORMAL CHARGING

Make sure power circuit voltage is the same as that shown on the charger specification plate.
Connect charger to power source.

The first charge should be for 2 hours before use. Insert battery into charger. The red light should glow indicating the battery is charging. After about 1 hour, the red light goes out indicating a fully charged battery; the green charge light glow indicating that the charger has switched to trickle charge mode. The battery may be left on the trickle charge until you are ready to use. Disconnect charger from power source when not in use.

INSTALLING OR REMOVING BATTERY

TO REMOVE BATTERY:

Depress the battery release button (on the back of battery) and pull battery out of grease gun.

TO INSTALL BATTERY:

Align battery with opening handle and push battery into handle so as to lock it in the place.

NSW

TEL: (02) 9939 0711

FAX: (02) 9939 0411

QLD/PNG

TEL: (07) 3204 9166

FAX: (07) 3204 1224

VIC/TAS

TEL: (03) 8787 8288

FAX: (03) 8787 8266

WA

TEL: (08) 9209 3066

FAX: (08) 9209 3933

SA/NT

TEL: (08) 8241 7111

FAX: (08) 8241 7011

NZ

TEL: (09) 447 1007

FAX: (09) 447 1008

HOW TO INSTALL A GREASE CARTRIDGE

REMOVING EMPTY GREASE CARTRIDGE

- 1) Pull back on the follower handle until the follower rod is fully extended and latch the follower rod groove into the slot on the barrel end cap of the Grease Barrel.
- 2) Unscrew the grease barrel assembly from the gun.
- 3) Carefully release the follower handle to eject the empty cartridge from container barrel.

INSTALLING GREASE CARTRIDGE

- 1) Remove the plastic cap from the grease cartridge and insert cartridge into the grease gun barrel.
- 2) Remove the pull tab from grease cartridge and screw grease barrel into pump assembly.
- 3) Release follower rod from slot to allow it to go forward. Purge air from pump. See air purging instructions.

TO CONVERT GUN TO ALLOW FILLING FROM BULK CONTAINER OR FILLER PUMP

- 1) Unscrew the grease barrel assembly cap from the grease barrel assembly. Pull on the follower handle to extract the follower and spring from the grease barrel assembly.
- 2) Grasp follower between thumb and forefinger and flip the follower lip from rear facing to the front facing.
- 3) Re-assemble the follower into the grease barrel assembly and position with the follower handle so that the grease barrel assembly cap can be tightened onto the container barrel.

TO FILL THE GUN FROM A BULK CONTAINER

- 1) Remove grease barrel from the gun.
- 2) Insert the open end of the grease barrel assembly into lubricant.
Slowly pull the follower handle back while pushing the grease barrel assembly deeper into the lubricant to prevent air pockets from being pulled into the grease barrel assembly.
- 3) When the follower rod is fully extended, pull it sideways to latch the rod groove into the keyhole slot in the grease barrel assembly cap.
- 4) Turn the grease barrel into the gun and release the follower rod from the slot on the end cap of the barrel to allow the follower rod go forward.
- 5) Clean any excess grease off the gun body.

TO FILL THE GUN WITH A FILLER PUMP

Engage the follower rod with the follower by rotating the follower handle. Insert the gun filler nipple into the filler pump socket. Operate the filler pump to fill the container. When the follower rod groove is exposed, the grease barrel assembly is filled. The follower rod will be extended approximately 8 inches (20 cm). Disengage the follower rod from the follower by rotating the follower handle. Push the follower rod into the grease barrel assembly.

TO EXPEL AIR POCKETS

- 1) Free the follower rod from the grease barrel assembly cap and depress the vent valve while pushing the follower rod forward.
- 2) Squeeze the trigger several times to operate gun until trapped air is expelled.
Push the follower rod into the grease barrel assembly.

INSPECTION, MAINTENANCE AND CLEANING

1. **WARNING:** Make sure the switch is in its off position, and unplug the charger from its electrical outlet before performing any inspection, maintenance, or cleaning.
2. **BEFORE EACH USE:** check the general condition of the grease gun. Check for misalignment or binding of moving parts, cracked or broken parts, leaking battery, damaged hose, and any other condition that may affect its safe operation. If abnormal noise or vibration occurs, have the problem corrected before further use.
Do not use damaged equipment.
3. **BATTERY PRECAUTIONS:** Never burn Batteries, as they can explode in a fire. Do not charge leaking batteries. Only a qualified service technician should perform maintenance on the battery. Contact local solid waste authorities for instructions on correct disposal or recycling of the battery.
4. **DAILY:** Use a soft, dry cloth, remove all dirt, grease, and debris from the exterior of the grease gun.
Do not use solvents to clean the grease gun.
5. **WHEN STORING:** Always remove the battery from the grease gun.
Keep the grease gun and its accessories in a clean, dry location and out of the reach of children.

NSW

TEL: (02) 9939 0711
FAX: (02) 9939 0411

QLD/PNG

TEL: (07) 3204 9166
FAX: (07) 3204 1224

VIC/TAS

TEL: (03) 8787 8288
FAX: (03) 8787 8266

WA

TEL: (08) 9209 3066
FAX: (08) 9209 3933

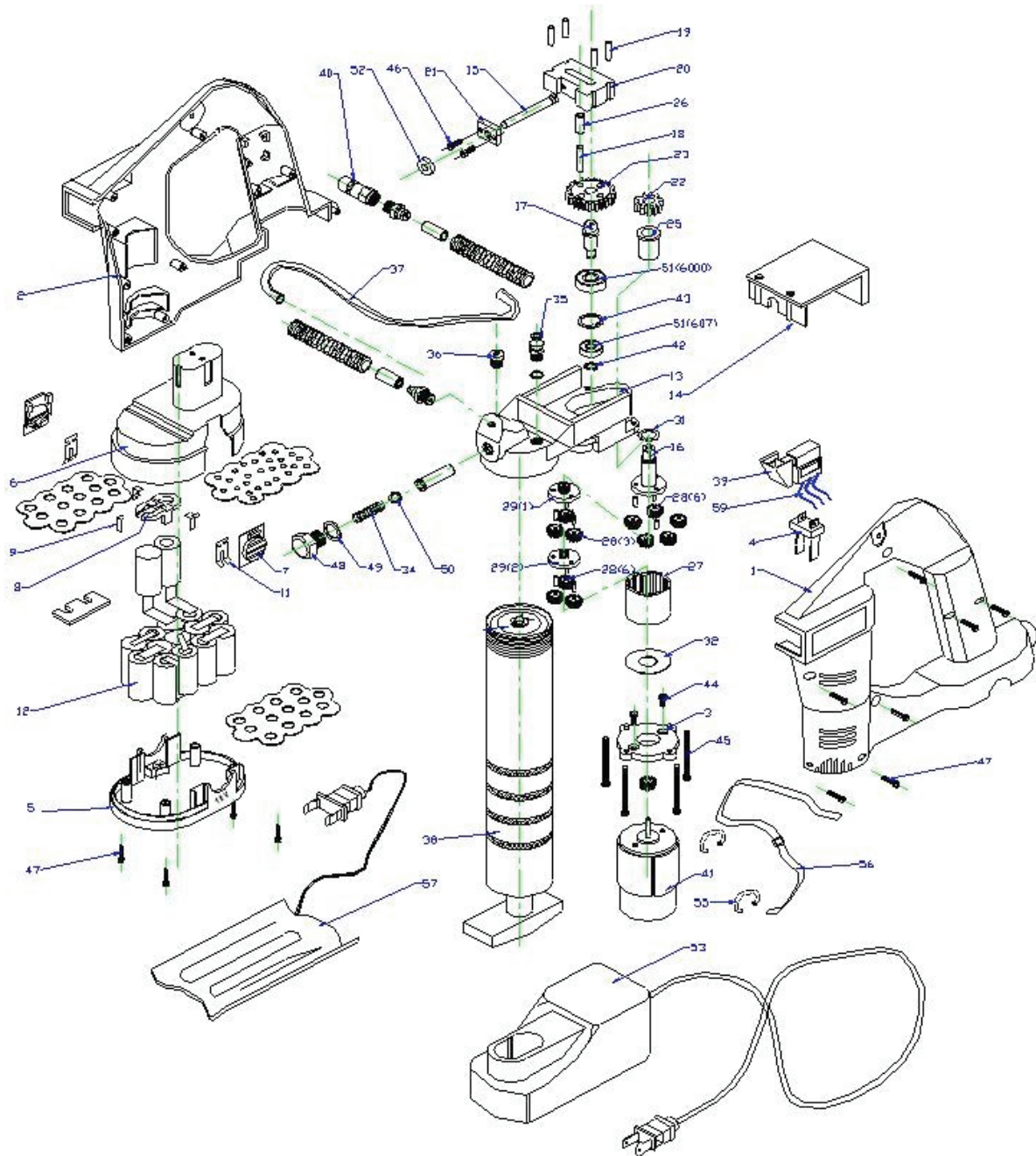
SA/NT

TEL: (08) 8241 7111
FAX: (08) 8241 7011

NZ

TEL: (09) 447 1007
FAX: (09) 447 1008

Parts And Drawing Breakdown G10040N 18V Lithium-ion Cordless Grease Gun



NSW
TEL: (02) 9939 0711
FAX: (02) 9939 0411

QLD/PNG
TEL: (07) 3204 9166
FAX: (07) 3204 1224

VIC/TAS
TEL: (03) 8787 8288
FAX: (03) 8787 8266

WA
TEL: (08) 9209 3066
FAX: (08) 9209 3933

SA/NT
TEL: (08) 8241 7111
FAX: (08) 8241 7011

NZ
TEL: (09) 447 1007
FAX: (09) 447 1008

Ordering Spare Parts

Parts List – Part No. G10040N

Item No.	Description
1	Left Cover
2	Right Cover
3	Bracket
4	Plug
5	Battery
6	Pump Head Cap
7	Pump Head Cap Cover
8	Plunger
9	Rotor
10	Hub
11	Shaft
12	Upper Plate
13	Lower Plate
14	Screw
15	Small Gear
16	Large Gear
17	Sleeve
18	Sleeve
19	Gear Housing
20	Idler Gear
21	Planetary Gear
22	Drive Gear
23	Gasket
24	Washer
25	Spring
26	Vent Valve
27	Filler Valve
28	Hose
29	Barrel
30	Trigger Switch
31	Nozzle
32	Motor
33	Snap Ring
34	Plate
35	Screw
36	Long Screw
37	Screw
38	Knob
39	Washer
40	Adjustment Ball
41	Collar
42	Charger
43	Gasket
44	Ring
45	12v Plug
46	Belt
47	Electro Thermal Blanket
48	Wire
49	Battery Capacity Display

NSW
TEL: (02) 9939 0711
FAX: (02) 9939 0411

QLD/PNG
TEL: (07) 3204 9166
FAX: (07) 3204 1224

VIC/TAS
TEL: (03) 8787 8288
FAX: (03) 8787 8266

WA
TEL: (08) 9209 3066
FAX: (08) 9209 3933

SA/NT
TEL: (08) 8241 7111
FAX: (08) 8241 7011

NZ
TEL: (09) 447 1007
FAX: (09) 447 1008

TROUBLE SHOOTING

Condition	Possible Cause	Corrective Action
Motor fails to run	Battery needs charging	Recharge battery
Faulty wiring to motor		Remove battery, disassemble handle and check wiring for loose connection.
Grease gun fails to dispense grease	Grease barrel assembly is out of grease	Check that grease barrel assembly has grease
Loss of prime		Repeat priming operation
Grease gun continues to lose prime	Air may be trapped in several locations	Empty grease barrel in container after bulk filling Assemble, refill and repeat priming instructions
Ball check valve kit is not functioning		Remove Item 38;39;40, clean and inspect ball seat area
Follower may be binding in grease barrel assembly		Step1. Replace grease barrel assembly. Step 2. Disassemble grease barrel assembly and clean Be sure that follower has properly entered the grease cartridge Or verify that the follower is not caught on the rim of the grease cartridge
Battery fails to take a charge	Charger may not have power Battery may be bad	Check that receptacle has power Replace battery

NSW

TEL: (02) 9939 0711

FAX: (02) 9939 0411

QLD/PNG

TEL: (07) 3204 9166

FAX: (07) 3204 1224

VIC/TAS

TEL: (03) 8787 8288

FAX: (03) 8787 8266

WA

TEL: (08) 9209 3066

FAX: (08) 9209 3933

SA/NT

TEL: (08) 8241 7111

FAX: (08) 8241 7011

NZ

TEL: (09) 447 1007

FAX: (09) 447 1008