

## MAGNETIC BASE DRILL

# MANUAL ARA-100A

TOP CLASS POWER & VERSATILITY

### FEATURES

- Large diameter hole cutting
- Cuts  $\varnothing 18\text{mm}$  -  $\varnothing 100\text{mm}$  through up to 75mm plate thickness
- Two speed electric drill with speed adjustment
- Load Indication and LED Condition System
- Drilling position adjustment 20mm back and forth and 15 degrees left or right
- Reversible feed handles
- Supplied with side-lock cutter holder (BHM03075) to use 75mm deep side-lock Jetbroach cutter from 50 to 100mm dia
- Can take Ozbroach and Jetbroach cutters as well as 3 Morse TaperTwist Drill Bits up to 32mm
- Requires a One-Touch holder (BHM03050) for use with Ozbroach one-touch cutters

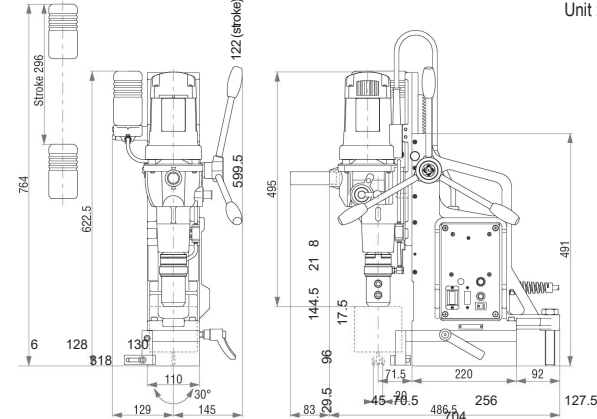


KEY FEATURES



### DIMENSIONS

ARA-100A  
Unit: mm

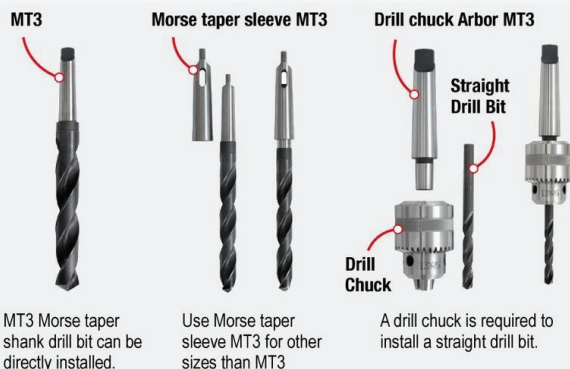


### Position Adjustable - Loosen Lever Clamp

- Clamp can be positioned for left and right hand operation.



### Twist Drill Bits - available on market



### Other Optional Items

- One-touch holder  
Part No: TB09727



- **OZBROACH**  
(High Speed Steel One-Touch Type  
25mm and 50mm depth of cut)



- **OZBROACH**  
(Countersink - Product No. OT10-30CS)  
\* Only in Manual Feed Mode



### JETBROACH

- (TCT Carbide Tipped Cutters  
25mm, 35mm and 50mm  
depth of cut)



Always use Genuine Nitto Kohki Cutters

Model No.	Power Source	Rated Power Consumption	No Load Speed	Hole Diameter	Plate Thickness	Magnet Holding Power	Weight
ARA-100A	220~240V AC 50/60HZ	1,800W	Low 110-210rpm High 330-660 rpm	17.5 - 100mm	9 - 75mm	1,733 kg/f	30kg