



DECEMBER 2019 TO FEBRUARY 2020

# SUMMMER SALE

★ **ON SALE** ★

**\$899**

NORMALLY \$999



## 4KVA PETROL GENERATOR

- Powerful 8HP 4 stroke engine
- Max watts: 3400W
- Sine wave technology (THD<5%)
- 2 x 15A outlets • Electric start
- Large 15L tank (TM510-3400)



★ **BONUS ITEMS** ★

- 13MM DRILL CHUCK & ADAPTOR (SA70102)
- 14, 18, 22mm CUTTERS & PIN (ASSET-Z)
- \$420 Total value

**\$1495**

## HOLEMAKER PRO 40 MAGNETIC BASE DRILL

- Durable & Versatile, European Made Machine
- Capacity (diameter) 40mm • Capacity (depth) 52mm • Through cutter coolant system • Comes complete in metal carry case • 12.5kg (HMPRO40)



★ **BONUS ITEM** ★

- 480MM WIDTH ROLLER CONVEYOR
- \$169 Value (RS-002)

**\$2895**

## 220MM X 220MM CAPACITY SWIVEL HEAD BANDSAW

- Swivel head 0° to 60° • Taiwanese made machine • Hydraulic down feed • 1.5HP, 240V, 1 speed • Round cut capacity: 90° : 227mm, 45° : 150mm (WP270SH-1)



★ **BONUS ITEM** ★

- 30M HOSE REEL
- 8mm I.D. Braided PU hose
- \$199 Value (TM300-030)

**\$1799**

## 5.5HP PETROL AIR COMPRESSOR - 60L

- Powered by Honda GX160 5.5HP engine • HD cast iron cylinder with aluminum head • Filter regulator • Large 60L tank • FAD: 355 L/min (TM352-55060)



DISTRIBUTED BY

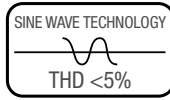
## INDUSTRIAL QUALITY PETROL GENERATORS

### ★ NEW RANGE ★

#### TRADE SERIES

ITM Trade Series generators are equipped with a reliable AVR (Automatic Voltage Regulator) alternator utilising advanced electronic technology to provide a very pure energy supply with a THD (Total Harmonic Distortion) of <5%. This clean and pure output means they are suitable to power even the most delicate electronic devices.

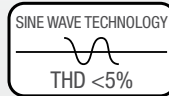
- Powerful 4 stroke OHV engines
- Low oil sensor
- Digital multimeter display
- Large capacity fuel tanks



Model No.	TM510-2300	TM510-2800	TM510-3400	TM510-5500	TM510-6500
Engine HP	6HP	7HP	8HP	13HP	15HP
KVA	2.8	3.5	4	6.8	8.1
Max Watts	2,300	2,800	3,400	5,500	6,500
Rated Watts	2,000	2,500	3,200	5,000	6,000
Noise @ 7m Full Load	75dB	75dB	76dB	78dB	79dB
Outlets	2 x 15A	2 x 15A	2 x 15A	2 x 15A	2 x 15A
Fuel Tank	15L	15L	15L	25L	25L
Running Time - 50% load	19 hours	16 hours	14 hours	13 hours	12 hours
Starting System	Recoil	Recoil	Electric	Electric	Electric
Handle & Wheel Kit	No	No	No	Yes	Yes
Net Weight	41Kg	44Kg	52Kg	81Kg	85Kg
Price	\$699	\$799	ON SALE \$899 Normally \$999	\$1499	\$1699

#### CONSTRUCTION SERIES

The Construction Series models have a simple push button electric start (battery included) with a convenient remote control which is perfect for the large property or worksite where the generator may not be close to the tool being powered.



All models come complete with a heavy duty handle and wheel kit, IP66 rated power outlets and RCD (Residual Current Device.) The construction series gens are perfect for the professional tradesman needing a tough yet reliable source of power.



Model No.	TM520-3400	TM520-5500	TM520-6500	TM520-8000
Engine HP	8HP	13HP	15HP	17HP
KVA	4	6.8	8.1	10
Max Watts	3,400	5,500	6,500	8,000
Rated Watts	3,200	5,000	6,000	7,500
Noise @ 7m Full Load	76dB	78dB	79dB	80dB
Outlets	1 x IP66	2 x IP66	2 x IP66	2 x IP66
Fuel Tank	15L	25L	25L	25L
Running Time - 50% load	14 hours	13 hours	12 hours	10 hours
Starting System	Electric w/ Remote	Electric w/ Remote	Electric w/ Remote	Electric w/ Remote
Handle & Wheel Kit	Yes	Yes	Yes	Yes
Net Weight	54Kg	83Kg	88Kg	95Kg
Price	\$1199	\$1699	ON SALE \$1699 Normally \$1899	\$2099



## ★ NEW RANGE ★



### TWIST KNOT CUP BRUSHES

Part No.	Dia.	Thread	Thread Adaptor	Wire Dia.	Max RPM	Price
STEEL WIRE						
TM7000-050	50mm	1/4" Hex	-	0.50mm	12,000	\$12.95
TM7000-065	65mm	M14 x 2.00	M10 x 1.25 & M10 x 1.5	0.50mm	12,500	\$19.95
TM7000-075	75mm	M14 x 2.00	M10 x 1.25 & M10 x 1.5	0.50mm	12,500	\$20.95
TM7000-100	100mm	M14 x 2.00	-	0.50mm	8,500	\$29.95
TM7000-125	125mm	M14 x 2.00	-	0.50mm	6,500	\$37.95
STAINLESS STEEL WIRE						
TM7000-265	65mm	M14 x 2.00	M10 x 1.25 & M10 x 1.5	0.50mm	12,500	\$26.95
TM7000-275	75mm	M14 x 2.00	M10 x 1.25 & M10 x 1.5	0.50mm	12,500	\$32.95
TM7000-210	100mm	M14 x 2.00	-	0.50mm	8,500	\$38.95



### CRIMP WIRE CUP BRUSHES

Part No.	Dia.	Thread	Thread Adaptor	Wire Dia.	Max RPM	Price
STEEL WIRE						
TM7010-065	65mm	M14 x 2.00	M10 x 1.25 & M10 x 1.5	0.30mm	12,500	\$15.95
TM7010-075	75mm	M14 x 2.00	M10 x 1.25 & M10 x 1.5	0.30mm	12,500	\$19.95
TM7010-100	100mm	M14 x 2.00	-	0.30mm	8,500	\$24.95
TM7010-125	125mm	M14 x 2.00	-	0.30mm	6,500	\$29.95
STAINLESS STEEL WIRE						
TM7010-275	75mm	M14 x 2.00	M10 x 1.25 & M10 x 1.5	0.30mm	12,500	\$29.95



### TWIST KNOT CUP BRUSHES WITH BAND

Part No.	Dia.	Thread	Thread Adaptor	Wire Dia.	Max RPM	Price
STEEL WIRE						
TM7001-065	65mm	M14 x 2.00	M10 x 1.25 & M10 x 1.5	0.50mm	12,500	\$19.95
TM7001-075	75mm	M14 x 2.00	M10 x 1.25 & M10 x 1.5	0.50mm	8,500	\$29.95
TM7001-100	100mm	M14 x 2.00	-	0.50mm	8,500	\$44.95
TM7001-125	125mm	M14 x 2.00	-	0.80mm	6,500	\$69.95
STAINLESS STEEL WIRE						
TM7001-175	75mm	M14 x 2.00	M10 x 1.25 & M10 x 1.5	0.50mm	8,500	\$44.95
TM7001-110	100mm	M14 x 2.00	-	0.50mm	8,500	\$69.95



### TWIST KNOT BEVEL BRUSHES

Part No.	Dia.	Thread	Thread Adaptor	Wire Dia.	Max RPM	Price
STEEL WIRE						
TM7002-075	75mm	1/4" HEX Shank	-	0.50mm	12,500	\$10.95
TM7002-100	100mm	1/4" HEX Shank	-	0.50mm	12,500	\$14.95
TM7002-110	100mm	M14 x 2.00	M10 x 1.25 & M10 x 1.5	0.50mm	12,500	\$16.95
TM7002-125	125mm	M14 x 2.00	-	0.50mm	12,500	\$21.95
STAINLESS STEEL WIRE						
TM7002-210	100mm	M14 x 2.00	M10 x 1.25 & M10 x 1.5	0.50mm	12,500	\$29.95



### CRIMP WIRE BEVEL BRUSHES

Part No.	Dia.	Thread	Thread Adaptor	Wire Dia.	Max RPM	Price
STEEL WIRE						
TM7011-100	100mm	M14 x 2.00	M10 x 1.25 & M10 x 1.5	0.30mm	12,500	\$15.95
STAINLESS STEEL WIRE						
TM7011-110	100mm	M14 x 2.00	M10 x 1.25 & M10 x 1.5	0.30mm	12,500	\$24.95



### TWIST KNOT WHEELS

Part No.	Dia.	Thread	Adaptor	Wire Dia.	Max RPM	Price
STEEL WIRE						
TM7003-085	85mm	1/4" Spindle	-	0.50mm	12,000	\$11.95
TM7003-100	100mm	M14 x 2.00	M10 x 1.25 & M10 x 1.5	0.50mm	20,000	\$19.95
TM7003-125	125mm	M14 x 2.00	M10 x 1.5	0.50mm	12,500	\$21.95
TM7003-150	150mm	22.2mm Bore	Bore Adaptor 5/8" & 1/2"	0.50mm	9,000	\$29.95
TM7003-200	200mm	22.2mm Bore	Bore Adaptor 5/8" & 1/2"	0.50mm	6,000	\$39.95
STAINLESS STEEL WIRE						
TM7003-225	125mm	22.2mm Bore	5/8"	0.50mm	12,500	\$49.95



### TWIST KNOT PIPELINE

Part No.	Dia.	Thread	Thread Adaptor	Wire Dia.	Max RPM	Price
STEEL WIRE						
TM7004-125	125mm	22.2mm	0.50mm	12,500	12,500	\$27.95
TM7004-150	150mm	22.2mm	0.50mm	9,000	12,500	\$34.95
TM7004-178	178mm	22.2mm	0.50mm	9,000	12,500	\$39.95



### CRIMP WIRE WHEELS

- Includes Multi Bore Adaptors
- Sizes down to 1/2" Diameter

Part No.	Dia.	Bore	Width	Wire Dia.	Max RPM	Price
STEEL WIRE						
TM7012-125	125mm	20mm	18mm	0.30mm	6,000	\$19.95
TM7012-150	150mm	32mm	19mm	0.30mm	6,000	\$24.95
TM7012-151	150mm	32mm	25mm	0.30mm	6,000	\$29.95
TM7012-200	200mm	32mm	20mm	0.30mm	4,500	\$34.95
TM7012-201	200mm	32mm	25mm	0.30mm	4,500	\$37.95
TM7012-250	250mm	32mm	40mm	0.30mm	3,000	\$69.95
TM7012-300	300mm	32mm	40mm	0.30mm	3,000	\$79.95
STAINLESS STEEL WIRE						
TM7012-415	150mm	32mm	19mm	0.30mm	6,000	\$74.95
TM7012-416	150mm	32mm	25mm	0.30mm	6,000	\$84.95
TM7012-220	200mm	32mm	20mm	0.30mm	4,500	\$89.95
TM7012-221	200mm	32mm	25mm	0.30mm	4,500	\$99.95

# LOCKING PLIERS BOLT CUTTERS



**\$22**  
C CLAMP  
REGULAR TIP  
275MM (TM603-101)



**\$25**  
C CLAMP  
SWIVEL PAD  
275MM (TM603-102)



**\$30**  
C CLAMP  
SWIVEL PAD  
450MM (TM603-103)



**\$15**  
CURVED JAW  
175MM (TM603-201)



**\$20**  
CURVED JAW  
250MM (TM603-202)



**\$25**  
CURVED JAW WITH  
RUBBER GRIP 250MM  
(TM603-203)



**\$20**  
STRAIGHT JAW  
250MM (TM603-301)



**\$25**  
STRAIGHT JAW  
WITH RUBBER GRIP  
250MM (TM603-302)



**\$15**  
LONG NOSE  
165MM (TM603-401)



**\$18**  
LONG NOSE  
WITH RUBBER GRIP  
165MM (TM603-402)



**\$20**  
SHEET METAL  
LOCKING PLIER  
200MM (TM603-500)



**\$20**  
WELDING CLAMP  
LOCKING PLIER  
220MM (TM603-600)



**FROM \$39**

## FORGED HANDLE BOLT CUTTERS

- Two stage heat treated precision machined jaws for extended cutting and resilience
- Adjustable arms
- Solid forged steel handles for durability
- Non-slip comfort rubber grips
- Built in stops for added safety

Length	Part No.	Price
350mm	TM600-035	\$39
450mm	TM600-045	\$59
600mm	TM600-060	\$79
750mm	TM600-075	\$99
900mm	TM600-090	\$149
1050mm	TM600-105	\$199



**FROM \$129**

## EXTRA HEAVY DUTY BOLT CUTTERS

- Optimal performance for cutting high tensile material
- Two stage heat treated, precision machined jaws for extended cutting and resilience
- Adjustable arms
- Solid forged steel handles for durability
- Built in stops for added safety

Length	Part No.	Price
750mm	TM601-075	\$129
900mm	TM601-090	\$179
1050mm	TM601-105	\$229



**\$19**  
**HAND RIVETER**

• Durable steel body and handles • Chrome molybdenum steel collet • Comfortable rubber grip • Nozzle sizes : 2.4mm, 3.2mm, 4.0mm, 4.8mm (TM620-002)



**\$29**  
**HEAVY DUTY HAND RIVETER**

• Premium cast aluminium body • Chrome molybdenum steel collet • Durable powder coat finish • Comfortable rubber grip • 4 Nozzles included: 2.4mm, 3.2mm, 4.0mm, 4.8mm (TM620-004)



**\$49**  
**ROTATING HEAD HAND RIVETER**

• Premium cast aluminium body • Chrome molybdenum steel collet • 360° Rotating head for hard to reach places • Durable powder coat finish • Comfortable rubber grip • 4 Nozzles included: 2.4mm, 3.2mm, 4.0mm, 4.8mm (TM620-006)



**\$59**  
**NUTSERT HAND RIVETER**

• Premium quality • Cast aluminium construction • Easy change mandrels • Sets 3, 4, 5 & 6mm rivet nuts (TM620-014)



**\$39**  
**EASY PULL TWIN HANDLE RIVETER**

• Chrome molybdenum steel collet • 3 Jaw system • 5 Nozzles : 3.2mm, 4.0mm, 4.8mm, 6.0mm & 6.4mm • Premium quality • Alloy body & Rubber grip handle (TM620-008)



**\$49**  
**SHORT ARM HAND RIVETER**

• Premium quality • Strong aluminium alloy body • High impact long lasting PVC handle • Chrome molybdenum steel collet • 3 Jaw system • Durable powder coat finish • 5 Nozzles : 3.2mm, 4.0mm, 4.8mm, 6.0mm & 6.4mm (TM620-010)



**\$69**  
**HEAVY DUTY LAZY TONG RIVETER**

• Premium quality • Single pull action designed for fast repetitive applications • Strong aluminium alloy body • Chrome molybdenum steel collet • 3 Jaw system • 5 Nozzles : 3.2mm, 4.0mm, 4.8mm, 6.0mm & 6.4mm (TM620-012)



## Ehoma

Clamping Solutions By ITM®

**EHOMA FORGED STEEL C CLAMPS**

• Hardened Acme spindle • Swivel pad ensures even pressure is applied on angular workpieces • Tempered & hot forged steel • Nickel & chrome plating

Span x Depth	Clamping Force	Part No.	Price
100x50mm	900kg	EC-BC4	\$55.00
125x65mm	850kg	EC-BC5	\$59.00
150x75mm	1000kg	EC-BC6	\$68.00
200x100mm	1000kg	EC-BC8	\$85.50
250x115mm	1200kg	EC-BC10	\$108.00
300x125mm	1500kg	EC-BC12	\$137.50



**EHOMA GENERAL PURPOSE FORGED STEEL CLAMPS**

• For general purpose clamping applications • Swivel pad

Span x Depth	Clamping Force	Part No.	Price
160x80mm	300kg	EC-G16CS	\$36.00
200x100mm	450kg	EC-G20CS	\$46.00
250x120mm	550kg	EC-G25CS	\$57.50
300x140mm	670kg	EC-G30CS	\$70.00
400x175mm	1000kg	EC-G40CS	\$94.50
600x175mm	1000kg	EC-G60CS	\$108.00
800x175mm	1000kg	EC-G80CS	\$125.00



**EHOMA HEAVY DUTY FORGED STEEL CLAMPS**

• Larger rail sizes 30x15mm • For heavy duty applications • Changeable clamping heads • Socket drive handle • Up to 1000mm span available

Span x Depth	Clamping Force	Part No.	Price
300x140mm	1200kg	EC-GS30C	\$130
400x120mm	1200kg	EC-GS40C	\$140
500x140mm	1200kg	EC-GS50C	\$153
600x120mm	1200kg	EC-GS60C	\$162



**EHOMA QUICK ACTION FORGED STEEL CLAMPS**

• Ratchet type lever prevents overloading & resists vibration • For high pressure, fast action clamping purposes

Span x Depth	Clamping Force	Part No.	Price
160x80mm	300kg	EC-G16L	\$75
200x100mm	350kg	EC-G20L	\$85
300x140mm	500kg	EC-G30L	\$119
400x120mm	550kg	EC-G40L	\$127
500x120mm	550kg	EC-G50L	\$133



**EHOMA PIVOT HANDLE FORGED STEEL CLAMPS**

• The comfortable pivot handle makes it easier to achieve maximum clamping pressure & allows faster clamping in restricted working areas

Span x Depth	Clamping Force	Part No.	Price
200x100mm	670kg	EC-REG20C	\$55
300x140mm	670kg	EC-REG30C	\$80
400x175mm	700kg	EC-REG40C	\$103
600x175mm	700kg	EC-REG60C	\$119



**EHOMA EXTRA HEAVY DUTY FORGED STEEL CLAMPS**

• Extra large rail size 40x20mm • For heavy duty applications • Changeable clamping heads • Socket drive handle • Up to 1500mm span available

Span x Depth	Clamping Force	Part No.	Price
300x175mm	2200kg	EC-SS30C	\$219
400x175mm	2200kg	EC-SS40C	\$235
500x175mm	2200kg	EC-SS50C	\$249
600x175mm	2200kg	EC-SS60C	\$265



## Holemaker

Drilling Solutions By ITM®

### CARBIDE BURRS - DOUBLE CUT

**\$85.50**

#### 3 PIECE 3/8" CARBIDE BURR SET

- Cylindrical end cut
- Cylindrical radius end
- Tree shape radius end (CB-SET-03)



**\$150**

#### 5 PIECE 3/8" CARBIDE BURR SET

- Cylindrical end cut
- Cylindrical radius end
- Ball shape • Tree shape radius end
- Cylindrical aluminium cut (CB-SET-01)



#### CYLINDRICAL END CUT

Size	Part No.	Price
1/4"	CB-SB1	\$32.00
3/8"	CB-SB3	\$42.00
1/2"	CB-SB5	\$64.50
5/8"	CB-SB6	\$117.50



#### CYLINDRICAL SQUARE END

Size	Part No.	Price
1/4"	CB-SA1	\$31.00
3/8"	CB-SA3	\$41.00
1/2"	CB-SA5	\$61.00
5/8"	CB-SA6	\$107.00



#### CYLINDRICAL RADIUS END

Size	Part No.	Price
1/4"	CB-SC1	\$34.00
3/8"	CB-SC3	\$43.00
1/2"	CB-SC5	\$67.00
5/8"	CB-SC6	\$100.00



#### BALL SHAPE

Size	Part No.	Price
1/4"	CB-SD1	\$29.50
3/8"	CB-SD3	\$36.00
1/2"	CB-SD5	\$47.50
5/8"	CB-SD6	\$59.00



## Holemaker

Drilling Solutions By ITM®



**\$159**

#### GENERAL ENGINEERING HOLESAW SET

- Set includes: 16, 19, 22, 25, 32, 35, 38, 44, 51, 57, 64, 76mm holesaws • 11/32" & 7/16" arbors • Arbor extension • 12" extension bar (UN108-100)

#### T.C.T. HOLESAWS 4.5MM DEPTH OF CUT

- Available from 14mm to 150mm
- Suitable for drilling steel, stainless steel, aluminium, FRP, PVC, plastics & fibreglass.

Diameter	Depth of Cut	Part No.	Price
16mm	4.5mm	MCS16	\$56.50
20mm	4.5mm	MCS20	\$56.50
22mm	4.5mm	MCS22	\$64.50
25mm	4.5mm	MCS25	\$64.50
32mm	4.5mm	MCS32	\$74.00
40mm	4.5mm	MCS40	\$81.50
50mm	4.5mm	MCS50	\$96.50



#### T.C.T. HOLESAWS 25MM DEPTH OF CUT

- Available from 14mm to 120mm
- Suitable for drilling steel plate, stainless steel, A.C. sheeting, aluminium, FRP, PVC, fibreglass & concrete coated pipes

Diameter	Depth of Cut	Part No.	Price
16mm	25mm	MCTR16	\$85.00
20mm	25mm	MCTR20	\$85.00
22mm	25mm	MCTR22	\$85.00
25mm	25mm	MCTR25	\$85.00
32mm	25mm	MCTR32	\$111.00
40mm	25mm	MCTR40	\$124.00
50mm	25mm	MCTR50	\$135.00



## Holemaker

Drilling Solutions By ITM®



**\$54**

#### COUNTERSINK SET 3MM TO 20.5MM SET

- 3 piece set including: 3 to 8.4mm, 3 to 12.4mm, 3 to 20.5mm • 3 flute 90° high speed steel (STSET-05)



**\$75.50**

#### COUNTERSINK SET 3MM TO 25MM SET

- 3 piece set including: 3 to 10.4mm, 3 to 16.5mm, 3 to 25mm • 3 flute 90° high speed steel (STSET-03)

**\$124**

#### COUNTERSINK SET 3MM TO 20.5MM SET

- 6 piece set including: 3 to 6.4mm, 3 to 8.4mm, 3 to 10.4mm, 3 to 12.4mm, 3 to 16.5mm, 3 to 20.5mm • 3 flute 90° high speed steel (STSET-01)

**\$319**

#### COUNTERSINK SET 2MM TO 25MM SET

- Cross hole • 5 piece set including: 2 to 5mm, 5 to 10mm, 10 to 15mm, 15 to 20mm, 20 to 25mm (SWSET-05)

## Holemaker

Drilling Solutions By ITM®

#### STEP DRILLS SPIRAL FLUTE

- Titanium Nitride Coated

Sizes Inc.	Part No.	Price
4 to 20mm	SD4-20MM	\$39.50
5 to 25mm	SD5-25MM	\$61.50
6 to 30mm	SD6-30MM	\$107.50
7 to 40.5mm	SD7-40.5MM	\$178.00



#### STEP DRILLS STRAIGHT FLUTE

- Titanium Nitride Coated

Sizes Inc.	Part No.	Price
4 to 12mm	SDST4-12MM	\$36.00
4 to 20mm	SDST4-20MM	\$40.00
5 to 25mm	SDST5-25MM	\$61.50
6 to 30mm	SDST6-30MM	\$107.00



**\$215**

#### STEP DRILL SET SPIRAL FLUTE

- 4 to 20mm • 5 to 25mm • 6 to 30mm (SDSET-1)



**\$182.50**

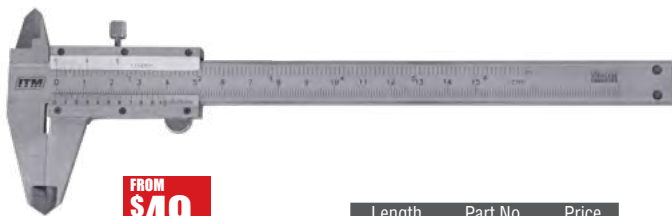
#### STEP DRILL SET STRAIGHT FLUTE

- 4 to 12mm • 5 to 25mm • 6 to 30mm (SDSTSET-1)





# PRECISION MEASURING PUNCHES



FROM **\$49**

Length	Part No.	Price
150mm	TM610-015	\$49
200mm	TM610-020	\$69
300mm	TM610-030	\$119

## VERNIER CALIPERS

- Metric and imperial measurements • Manufactured from hardened stainless steel • Convenient thumb screw locking mechanism
- Suitable for inside, outside, depth and step measurements
- Durable plastic storage case • Graduation: 1mm intervals
- Lower resolution: 0.05mm • Accuracy: +/- 0.03mm



FROM **\$69**

Length	Part No.	Price
150mm	TM610-115	\$69
200mm	TM610-220	\$89
300mm	TM610-330	\$129

## DIGITAL VERNIER CALIPERS

- Large easy to read dual mode LCD screen (metric/imperial) • Manufactured from hardened stainless steel • Suitable for inside, outside, depth and step measurements • Auto off feature • Zero setting at any position • Durable plastic storage case • Graduation: 1mm intervals • Accuracy: +/- 0.03mm
- Resolution: 0.01mm (0.0005") • Battery included

**\$49**

## 25MM OUTSIDE MICROMETER

- Enamelled frame • Ratchet stop and locking screw
- Carbide tipped measuring faces • Ratchet thimble
- Durable plastic storage case • Range: 0 - 25mm
- Graduation: 0.01mm • Accuracy: +/- 0.04mm
- Jaw reach: 29mm (TM610-525)



**\$129**

## 25MM DIGITAL OUTSIDE MICROMETER

- Enamelled frame • Carbide tipped measuring faces • Ratchet stop and locking screw • Dual mode digital display (metric/imperial) • Auto off feature • Durable plastic storage case • Range: 0 - 25mm • Graduation: 0.001mm (0.00005") • Accuracy: +/- 0.004mm • Jaw reach: 23mm
- Battery included (TM610-625)



## STEEL PUNCHES

### NUMBER STAMPS



Size	Part No.	Price
3mm	GZ-25902	\$13.00
4mm	GZ-25903	\$14.00
5mm	GZ-25904	\$18.50
6mm	GZ-25905	\$23.50
8mm	GZ-25906	\$32.50
10mm	GZ-25907	\$39.00
12mm	GZ-25908	\$70.00

### LETTER STAMPS



Size	Part No.	Price
3mm	GZ-26102	\$38.00
4mm	GZ-26103	\$40.00
5mm	GZ-26104	\$54.00
6mm	GZ-26105	\$69.00
8mm	GZ-26106	\$95.00
10mm	GZ-26107	\$113.50
12mm	GZ-26108	\$210.50



## HOLLOW & ARCH PUNCH SETS



For punching round holes in gasket material, leather, rubber, canvas, cardboard, plastic & other soft material.

### HOLLOW PUNCH SET

- 6 piece set including 5, 6, 8, 10, 11, 12mm (GZ-26391)



**\$50.50**

### ARCH PUNCH SET

- 7 piece set : 6, 10, 12, 16, 19, 22, 25mm (GZ-26441)



**\$113.50**



**\$39**

## PIN PUNCH SET



- Hardened and tempered carbon steel
- 6 piece set : 2.4mm (3/32"), 3mm (1/8"), 4mm (5/32"), 5mm (3/16"), 6mm (1/4"), 8mm (5/16") (GZ-25612)



**\$56**

## EXTRA LONG PIN PUNCH SET



- 200mm OAL • 5 piece set : 3mm (1/8"), 5mm (3/16"), 6mm (1/4"), 8mm (5/16"), 9.5mm (3/8") (GZ-25655)

## CHISEL & PUNCH SET - 24 PIECE



- **Cold Chisels:** 125 x 6mm, 125 x 8mm, 140 x 10mm, 150 x 13mm, 163 x 16mm, 175 x 19mm, 190 x 22mm

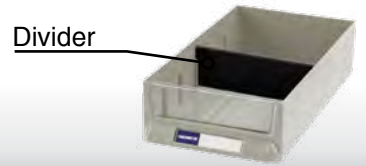
- **Centre Punches:** 5/64", 5/32", 1/4"
- **Pin Punches:** 1/16", 3/32", 1/8", 5/32", 3/16", 1/4", 5/16"
- **Starting Punches:** 1/16", 1/8", 5/32", 3/16", 3/16", 1/4", 5/16" (GZ-33003)

**\$146**

## PARTS CABINETS

• Highest quality & heavy duty, robust parts cabinets designed for industrial use • Metal frame construction using 0.8mm galvanised steel • Large range of sizes and styles • Drawers come with dividers & contents description slip • Additional dividers available in packs of 10

Description	Part No.	Price
10x A4 Series Dividers	PB-A4DIVIDER	\$3.50
10x A5 Series Dividers	PB-A5DIVIDER	\$3.00
10x A6 Series Dividers	PB-A6DIVIDER	\$4.00
10x A7 Series Dividers	PB-A7DIVIDER	\$3.00
10x A8 Series Dividers	PB-A8DIVIDER	\$3.00
10x HD Series Dividers	PB-HDDIVIDER	\$4.50



### A8 SERIES

• 60 drawers • 10kg capacity per drawer • Slots for 3x dividers • 1x divider supplied per drawer • 586W x 222D x 937H (PB-A8560)



**\$515**

### ST2 SERIES

• 60 drawer • 10kg capacity per drawer • Slots for 3x dividers • 1x divider supplied per drawer • 586W x 222D x 937H (PB-ST2460)



**\$439**

### ST1 SERIES

• 75 drawer • 10kg capacity per drawer • Slots for 3x dividers • 1x divider supplied per drawer • 586W x 222D x 937H (PB-ST1575)



**\$515**

### A5 SERIES

• Large capacity • Transparent PS plastic window • 10kg capacity per drawer • Slots for 5x dividers • 1x divider supplied per drawer



PB-A5336  
**36 DRAWERS**  
586W x 290D x 937H  
**\$520**

### A6 SERIES

• 10kg capacity per drawer • Slots for 3x dividers • 1x divider supplied per drawer



PB-A6330H  
**30 DRAWERS**  
533W x 265D x 937H  
**\$439**

### A7 SERIES

• Transparent PS plastic window • 10kg capacity per drawer • Slots for 3x dividers • 1x divider supplied per drawer



PB-A7448  
**48 DRAWERS**  
586W x 222D x 937H  
**\$425**



PB-A5336D  
**36 DRAWERS**  
586W x 340D x 970H  
with lockable doors  
**\$699**



PB-A6330HD  
**30 DRAWERS**  
533W x 313D x 970H  
with lockable doors  
**\$729**



PB-A7448D  
**48 DRAWERS**  
586W x 270D x 970H  
with lockable doors  
**\$659**



# BENCH VICES BENCH GRINDERS



## FABRICATED STEEL BENCH VICES

- Precision machined knurled jaws with V-Groove • Large diameter screw • Extra heavy-duty • Precise sliding jaw



### OFFSET JAW

Jaw Width	Weight	Part No.	Price
100mm	11.2kg	TM104-100	\$145
125mm	20.3kg	TM104-125	\$279
150mm	25.0kg	TM104-150	\$299
200mm	60.0kg	TM104-200	\$755

### STRAIGHT JAW

Jaw Width	Weight	Part No.	Price
100mm	10.5kg	TM102-100	\$140
125mm	18.5kg	TM102-125	\$240
150mm	22.6kg	TM102-150	\$279
200mm	37.0kg	TM102-200	\$510



### PROFESSIONAL MECHANICS BENCH VICES

Jaw Width	Weight	Part No.	Price
75mm	7.5kg	TM100-075	\$79
100mm	10.0kg	TM100-100	\$115
125mm	15.5kg	TM100-125	\$160
150mm	18.0kg	TM100-150	\$195
200mm	31.0kg	TM100-200	\$295

**\$85**

### WORKSHOP BENCH VICE

- Hardened steel jaws • Close grained cast iron body • 100mm jaw width • 7.0kg weight (TM098-100)



**\$159**

### 150MM BENCH GRINDER

- 370W, 240V • 25mm width grinding wheels, 36 & 60 grit • Durable cast iron body • Vibration absorbing pads • Heavy duty tool rests (TM400-150) • Stand to suit \$99 (TM403-010)



**\$199**

### 200MM BENCH GRINDER

- 600W, 240V • 25mm width grinding wheels, 36 & 60 grit • Durable cast iron body • Vibration absorbing pads • Heavy duty tool rests (TM400-200) • Stand to suit \$99 (TM403-010)



### STANDARD DRILL PRESS VICES

- Cast iron body • Machined steel jaws • Great for machine shops, fabrication workshops & tool rooms

Jaw Width	Jaw Height	Capacity	Weight	Part No.	Price
102mm	21mm	105mm	3.2kg	VDP102	\$42
150mm	28mm	150mm	7.2kg	VDP150	\$70



### HEAVY DUTY DRILL PRESS VICES

- 3 Way vices

Jaw Width	Jaw Height	Capacity	Weight	Part No.	Price
100mm	30mm	92mm	6.75kg	VDPL100	\$72
150mm	36mm	140mm	13kg	VDPL155	\$102

**\$79**

### 100MM CROSS VICE

- Jaw width : 110mm • Jaw opening : 100mm • X movement : 85mm • Y movement : 110mm • Net weight : 7kg • Cast iron body • Machined steel jaws (TM130-100)

**\$159**

### 150MM CROSS VICE

- Jaw width : 160mm • Jaw opening : 150mm • X movement : 160mm • Y movement : 155mm • Net weight : 14.5kg • Cast iron body • Machined steel jaws (TM130-150)



**\$389**

### 250MM BENCH GRINDER

- 900W, 240V • 25mm width grinding wheels, 36 & 60 grit • Durable cast iron body • Vibration absorbing pads • Heavy duty tool rests (TM400-250) • Stand to suit \$169 (TM403-012)



**\$229**

### 200MM BUFFING MACHINE

- 550W, 240V • 14mm width mop wheels • Durable cast iron body • Vibration absorbing pads (TM402-200) • Stand to suit \$169 (TM403-012)

ITM bandsaws are industrial quality machines, designed for all day use in demanding metal fabrication workshops.

- Made in Taiwan
- Quality casting & componentry
- Industry proven with over 20 years on the Australian market



**BONUS ITEM** 400MM WIDTH ROLLER CONVEYOR  
• \$169 Value (RS-002)

Model	UE125DV	UE712A	WP210SH-1	WP210SH-3	WP210SHV-1	WP270SH-1	WP270SH-3
Features	• Swivel head 0° to 60° • Emergency Stop Switch	• Swivel vice, 0° to 45° • Hydraulic downfeed	• Swivel head 0° to 60° • Hydraulic down feed			• Swivel head 0° to 60° • Hydraulic down feed	
Motor	0.4HP, 240V	1HP, 240V	1HP, 240V	1HP, 415V	1HP, 240V	1HP, 240V	1.5HP, 415V
Speed	Variable 23-75mpm	4 speed 22, 33, 45, 65mpm	1 speed 80mpm	2 speed 40 & 80mpm	Variable 20-85mpm	1 speed 72mpm	2 speed 36 & 72mpm
Rectangular Capacity 90°	120 x 120mm	300 x 180mm	210 x 95mm	210 x 95mm	210 x 95mm	260 x 110mm	260 x 110mm
Square Cut Capacity 90°	120 x 120mm	180 x 180mm	170 x 170mm	170 x 170mm	170 x 170mm	220 x 220mm	220 x 220mm
Square Cut Capacity 45°	70 x 70mm	110 x 110mm	120 x 120mm	120 x 120mm	120 x 120mm	145 x 145mm	145 x 145mm
Price	<b>\$825</b>	<b>\$1495</b>	<b>\$2295</b>	<b>\$2295</b>	<b>\$2595</b>	<b>\$2895</b>	<b>\$2895</b>



Model	WP275DS-1	WP275DS-3	WP275DSV-1	WP310DS-3	WE350DS	WE350DSA-3
Features	• 2 way swivel head 0° to 60° • Hydraulic down feed			• 2 way swivel head 0° to 60° • Hydraulic down feed	• 2 way swivel head 0° to 60° • Hydraulic down feed	• Semi-automatic function • 2 way swivel head 0° to 60°
Motor	1HP, 240V	1.5HP, 415V	1.5HP, 240V	2HP, 415V	2HP, 415V	2HP, 415V
Speed	1 speed, 72mpm	2 speed, 36, 72mpm	Variable 20-85mpm	2 speed 36, 72mpm	2 speed 34, 68mpm	2 speed 34, 68mpm
Rectangular Capacity 90°	260 x 110mm	260 x 110mm	260 x 110mm	310 x 210mm	350 x 220mm	350 x 220mm
Square Cut Capacity 90°	220 x 220mm	220 x 220mm	220 x 220mm	250 x 250mm	260 x 260mm	260 x 260mm
Square Cut Capacity 45°	145 x 145mm	145 x 145mm	145 x 145mm	200 x 200mm	220 x 200mm	220 x 200mm
Price	<b>\$4495</b>	<b>\$4495</b>	<b>\$4795</b>	<b>\$5195</b>	<b>\$7295</b>	<b>\$8995</b>



Model	MB-280CSO-1	MB-280CSO-3	MB-330CSO-1	MB-330CSO-3	MB-330MS-3	MB-411CSO-3	MB-411MS-3
Features	• Swivel head 0° to 60° • Hydraulic down feed		• 2 Way swivel head 0° to 60° • Hydraulic down feed		• Semi-automatic function • 2 Way swivel head 0° to 60°	• 2 Way swivel head 0° to 60° • Hydraulic down feed	• Semi-automatic function • 2 Way swivel head 0° to 60°
Motor	1.5HP, 240V	1.5HP, 415V	1.5HP, 240V	1.5HP, 415V	1.5HP, 415V	2HP, 415V	2HP, 415V
Speed	1 speed 64mpm	2 speed 32, 66mpm	1 speed 75mpm	2 speed 38, 78mpm	2 speed 38, 78mpm	2 speed 38, 77mpm	2 speed 38, 78mpm
Rectangular Capacity 90°	250 x 155mm	250 x 155mm	330 x 220mm	330 x 220mm	330 x 220mm	400 x 200mm	400 x 200mm
Square Cut Capacity 90°	215 x 215mm	215 x 215mm	250 x 250mm	250 x 250mm	250 x 250mm	280 x 280mm	280 x 280mm
Square Cut Capacity 45°	150 x 150mm	150 x 150mm	210 x 210mm	210 x 210mm	210 x 210mm	220 x 220mm	220 x 220mm
Price	<b>\$5495</b>	<b>\$5495</b>	<b>\$9495</b>	<b>\$9495</b>	<b>\$12495</b>	<b>\$11495</b>	<b>\$14495</b>



# METAL CUTTING SAWS



Model	NEW250DV-1	NEW250DV-3	TRS300-1	TRS300-3	TRS315EDV-1	TRS315EDV-3	NEW350E-3
Description	250mm Coldsaw		300mm Coldsaw		315mm Coldsaw		350mm Coldsaw
Features	<ul style="list-style-type: none"> <li>Swivel head 45° left &amp; right</li> <li>Double vice</li> </ul>		<ul style="list-style-type: none"> <li>Swivel head 45° left &amp; right</li> </ul>		<ul style="list-style-type: none"> <li>Swivel head 45° left &amp; right</li> <li>Double vice</li> </ul>		<ul style="list-style-type: none"> <li>Swivel head 45° left &amp; right</li> <li>Electric coolant pump</li> </ul>
Motor	1.2HP, 240V	1.75HP, 415V	2HP, 240V	3HP, 415V	2HP, 240V	3HP, 415V	3.2HP, 415V
Speed	1 speed 40rpm	2 speed 40, 80rpm	1 speed 40rpm	2 speed 40, 80rpm	1 speed 40rpm	2 speed 40, 80rpm	2 speed 20, 40rpm
Round Cut Capacity 90°	70mm	70mm	90mm	90mm	90mm	90mm	110mm
Round Cut Capacity 45°	65mm	65mm	90mm	90mm	80mm	80mm	90mm
Price	\$2350	\$2350	\$2695	\$2695	\$4095	\$4095	\$4495



Model	NEW350EDV-3	NEW350S-3	NTS315-3	TA400-3	TV400-3
Description	350mm Coldsaw	350mm Coldsaw	315mm Vertical Coldsaw	400mm T.C.T. Coldsaw	400mm Friction Cut Saw
Features	<ul style="list-style-type: none"> <li>Swivel head 45° left &amp; right</li> <li>Electric coolant pump</li> <li>Double vice</li> </ul>	<ul style="list-style-type: none"> <li>Semi auto operation</li> <li>Swivel head 45° left &amp; right</li> <li>Double vice</li> <li>Includes stand</li> </ul>	<ul style="list-style-type: none"> <li>Semi auto operation</li> <li>Swivel head 45° left &amp; right</li> <li>Includes stand</li> </ul>	<ul style="list-style-type: none"> <li>T.C.T. Compound Aluminium Saw</li> <li>Swivel head 45° left &amp; right</li> <li>Belt drive</li> </ul>	<ul style="list-style-type: none"> <li>Swivel head 45° left &amp; right</li> <li>Belt drive</li> </ul>
Motor	3.2HP, 415V	3.2HP, 415V	2.5HP, 415V	3HP, 415V	7.4HP, 415V
Speed	2 speed 20, 40rpm	2 speed 20, 40rpm	2 speed 33, 66rpm	1 speed 3000rpm	1 speed 3800rpm
Round Cut Capacity 90°	110mm (90°), 80mm (45°)	110mm	100mm	140mm	130mm
Round Cut Capacity 45°	80mm	80mm	100mm	130mm	120mm
Price	\$5295	\$9950	\$10950	\$4695	\$3295



Model	MB-420DI-3 Bandsaw	MB-650DI-3 Bandsaw	Model	S14
Features	<ul style="list-style-type: none"> <li>Semi-automatic</li> <li>2 Way swivel head 0° to 60°</li> </ul>	<ul style="list-style-type: none"> <li>Semi-automatic</li> <li>2 Way swivel head 0° to 60°</li> </ul>	Description	350mm Cold Cut T.C.T. Saw
Rectangular Capacity 90°	550 x 400mm	620 x 450mm	Features	<ul style="list-style-type: none"> <li>Swivel vice, 0° to 45°</li> </ul>
Square Cut Capacity 90°	400 x 400mm	450 x 450mm	Cut Capacity 90°	120 x 120mm
Square Cut Capacity 45°	380 x 380mm	430 x 430mm	Cut Capacity 45°	120 x 90mm
Motor	2HP, 415V	2.95HP, 415V	Motor	3HP, 240V
Speed	Variable 22 - 73mpm	Variable 23 - 95mpm	Speed	1 speed 1450rpm
Price	\$22,500	\$26,995	Price	\$750

## Holemaker

Drilling Solutions By ITM®

**\$995**

### HOLEMAKER PRO 35

- Quality, Compact & Robust European Made Machine
- Lightweight, only 10kg!
- Ideal for onsite & overhead tasks
- Capacity (diameter) 35mm • Capacity (depth) 52mm
- Gravity feed coolant system with magnetically attached bottle
- Comes complete in plastic carry case (HMPRO35)



**\$2245**

### HOLEMAKER PRO 36AD

- Ultra low profile, constant working height of 176mm
- Super lightweight, only 9.5kg!
- Capacity (diameter) 36mm • Capacity (depth) 30mm
- Squeeze bottle coolant system • Comes complete in metal case (HMPRO36AD)



**BONUS ITEMS\***

- 13MM DRILL CHUCK & ADAPTOR (SA70102)
- 14, 18, 22mm CUTTERS & PIN (ASSET-Z)
- \$420 Total Value

**\$1495**

### HOLEMAKER PRO 40

- Durable & Versatile, European Made Machine
- Capacity (diameter) 40mm
- Capacity (depth) 52mm
- Through cutter coolant system • Comes complete in metal carry case • 12.5kg (HMPRO40)



## Holemaker

Drilling Solutions By ITM®

**\$2375**

### HOLEMAKER PRO 50

- Versatile & Multi-Purpose, European Made Machine
- Capacity (diameter) 52mm
- Capacity (depth) 52mm
- #2 Morse taper spindle, for use with drill chucks, taper shank drills, reamers etc.
- Powerful 1260W motor & 2 speed gearbox • 16.5kg (HMPRO50)



**\$3775**

### HOLEMAKER PRO 75

- #3 Morse taper variable speed machine
- Capacity (diameter) 75mm • Capacity (depth) 75mm (110mm with optional arbor)
- 32mm #3MT drill bit capacity • 2 speed gearbox with electronic variable speed 80 to 160rpm; 210 to 420rpm • 1650W motor output • Motor soft start (HMPRO75)



**\$4600**

### HOLEMAKER PRO 110

- Large Capacity #4 Morse Taper Heavy Duty Machine
- Capacity (diameter) 110mm • Capacity (depth) 75mm (110mm with optional arbor)
- 47mm #4MT drill bit capacity • 4 speed heavy duty mechanical gearbox • 1650W motor output (HMPRO110)



## Holemaker

Drilling Solutions By ITM®



**\$8899**

### HOLEMAKER 35 PNEUMATIC

- Pneumatic powered angle drive machine
- Capacity (diameter) 35mm • Capacity (depth) 25mm
- Constant working height of 183mm • Certified ATEX II2G/D C IIC T6; T4 motor & body for areas with risk of explosion
- European made (HMP35AD-ATEX)

**\$8679**

### HOLEMAKER 45 PNEUMATIC

- #2 Morse taper, pneumatic powered machine
- Capacity (diameter) 45mm • Capacity (depth) 52mm • 23mm #2MT drill bit capacity • 2 speed 190 / 290rpm
- Motor certified ATEX II2G/D C IIC T6; T4 motor for areas with risk of explosion
- European made (HMP45)



Diameter	Depth	Part No.	Price
12mm	25mm	AT1225	\$52.50
14mm	25mm	AT1425	\$53.50
16mm	25mm	AT1625	\$57.50
18mm	25mm	AT1825	\$60.00
20mm	25mm	AT2025	\$63.50
22mm	25mm	AT2225	\$73.00
24mm	25mm	AT2425	\$78.50



### HOLEMAKER GOLD SERIES ANNULAR CUTTERS

- Available in 1 mm increments from 12 to 52mm diameter
- Titanium nitride coating • M2AL high speed steel material
- Step hardened process • Multi-cut geometry • Fully ground with internal relief
- Universal shank • Available in sizes : 12 - 60mm diameter, 25 to 75mm depth of cut

## Drill Doctor

The Drill Bit Sharpener



**\$269**

### DRILL DOCTOR XP DRILL BIT SHARPENER

- 2.5mm to 13mm drill bit capacity
- Creates & sharpens split point bits • 118° sharpening angle
- Adjustable relief angle • 240V motor • 3 year warranty (DDXP)

## Drill Doctor

The Drill Bit Sharpener



**\$475**

### DRILL DOCTOR 500X DRILL BIT SHARPENER

- Tradesman model • 2.5mm to 13mm drill bit capacity
- 118° or 135° sharpening angle • Creates & sharpens split point bits • 3 year warranty (DD500X)

## Drill Doctor

The Drill Bit Sharpener



**\$595**

### DRILL DOCTOR 750X DRILL BIT SHARPENER

- Top of the line tradesman model • 2.5mm to 19mm drill bit capacity
- 115° to 140° sharpening angle • Creates & sharpens split point bits • 3 year warranty (DD750X)



# DRILLING MACHINES PORTABLE VENTILATORS



## BELT DRIVE BENCH & PEDESTAL DRILLS

• Quality casting, construction & componentry • Emergency stop NVR safety switch • Chuck safety guard • Drill chuck & arbor • Drill drift (on MT models)



**\$290**

• 13mm capacity • 13mm B16 chuck • 1/2HP, 240V motor • 5 speed • 680mm height • 27kg weight (TD1013)



**\$449**

• 16mm capacity • 16mm B16 chuck • #2 MT Spindle • 1/2HP, 240V motor • 16 speed • 980mm height • 50kg weight (TD1316)



**\$539**

• 16mm capacity • 16mm B16 chuck • #2 MT Spindle • 3/4HP, 240V motor • 16 speed • 1580mm height • 60kg weight (TD1316F)



**\$819**

• 20mm capacity • 20mm B22 chuck • #3 MT Spindle • 1HP, 240V motor • 12 speed • 1600mm height • 80kg weight (TD1420F)



**\$1295**

• 25mm capacity • 20mm B22 chuck • #3 MT Spindle • 2HP, 240V motor • 12 speed • 1710mm height • 120kg weight (TD1825F)



**\$1349**

• 32mm capacity • 20mm B22 chuck • #4 MT Spindle • 2HP, 240V motor • 12 speed • 1710mm height • 145kg weight (TD2032F)

## EXTRA HEAVY DUTY DRILLS

• Quality Taiwanese machines with heavy duty casting and construction for proven lasting durability in industrial workshops

### K1720HFD

• 23mm capacity  
• 16mm #3 JT chuck  
• #2 MT Spindle  
• 1HP, 240V motor  
• 12 speed  
• 1600mm height  
• 78kg weight

**\$1095**



### K2532

• 32mm capacity  
• 16mm #3 JT chuck  
• #3 MT Spindle  
• 1.2HP, 240V motor  
• 12 speed  
• 1752mm height  
• 158kg weight

**\$1795**



## GEARED HEAD DRILLING MACHINE QUALITY PRECISION MACHINE FOR DRILLING & TAPPING

• #4 Morse taper spindle  
• Micro feed precision  
• Geared head tilts 90° right & left • Forward and reverse operation • Accessories include arbor, drill chuck, drill sleeves • 40mm capacity  
• 1.5HP motor, 6 speed gearbox • 1770mm height  
• 320kg weight • 240V (TGD400-1) or 415V (TGD400-3)

**\$3295**



## GEARED HEAD DRILLING & MILLING MACHINE

• All the features of the TGD400 combined with :  
Milling table, Recirculating coolant system  
• 240V (TGMD400-1)  
or 415V (TGMD400-3)

**\$3395**



## PORTABLE VENTILATOR SETS

• Suitable for air/fume extraction or blowing fresh air • Ideal ventilation for workshops and confined areas • Includes 5 metre expandable ducting • Large capacity motor creating a very high flow rate • Specially designed axial propeller • High static pressure



**\$240**

• 200mm • 150W Motor  
• 25m<sup>3</sup>/min Flow Rate (TPV200SET)

**\$269**

• 300mm • 550W Motor  
• 60m<sup>3</sup>/min Flow Rate (TPV300SET)

**\$795**

• 400mm • 1500W Motor  
• 128m<sup>3</sup>/min Flow Rate (TPV400SET)

**\$965**

• 500mm • 1500W Motor  
• 138m<sup>3</sup>/min Flow Rate (TPV500SET)

**\$1309**

• 600mm • 2200W Motor  
• 290m<sup>3</sup>/min Flow Rate (TPV600SET)



**\$329**

## 1" TUBE BENDER

- 3/8", 1/2", 9/16", 5/8", 3/4", 7/8", 1" Cast formers
- 0° to 180° Bending angle
- Bench mountable
- Supplied in robust plastic carry case (TM810-025)



**\$279**

## 1" HYDRAULIC PIPE BENDER

- 3/8", 1/2", 3/4", 1" cast steel formers
- 0° to 90° Bending angle
- 6,000kg Force capacity
- 150mm Stroke
- Supplied in metal carry case (TM811-03025)



## MINI SPIDER FILLET WELDING CARRIAGE

- Battery-powered welding tractor designed to produce continuous fillet welds using MIG torches • Compact and lightweight design to weld in narrow spaces, 200mm minimum working width • Horizontal speed: 0-110 cm/min • 4 wheel drive with magnetic base allows for vertical & horizontal welding closed loop speed stabilization system. • Includes battery, charger sold separately (WA-SPIDER)



**\$3995**



## GECKO FILLET WELDING CARRIAGE

- 240V or battery-powered options available • 4 wheel drive with magnetic base allows for vertical & horizontal welding • Torch holder mechanism for different types of MIG torches with diameters of 16 - 22mm • Constant and repeatable travel speed with closed loop stabilization system enables specific weld bead geometry.
- 240V (WA-GECKO) **\$3995**
- Battery powered (Can be adapted to 240V) (WA-GECKO-18V) **\$4495**



## LIZARD - PROGRAMMABLE FILLET WELDING CARRIAGE

- Programmable welding patterns & parameters such as weld length, distance, reverse fill, crater fill time and more, enabling weld bead geometry that is exact to the required specifications • Continuous and stitch weld capability • Oscillation attachment available • 4 wheel drive with magnetic base for vertical welding • Accepts MIG / MAG torches with diameters of 16 - 22mm • Closed loop speed control system • 0 - 1200mm/min horizontal speed (WA-LIZARD)



**\$5795**



## RAIL TUG - TRACK MOUNTED FILLET WELDING CARRIAGE

- Produce butt and fillet welds without oscillation
- Uses Rigid, Semi-flexible, Hi-flex & Pipe ring track on ferrous and non-ferrous materials • Very wide range of tracks & accessories available to customise the machine to the job • Accepts MIG torches with diameters of 16 - 22mm • Closed loop speed control system • Some components shown in image are sold separately, see website for list of included components: www.itmtools.com.au (WA-RAILTUG)



**\$4995**



## RAIL BULL - TRACK MOUNTED FILLET WELDING CARRIAGE

- Produce butt and fillet welds with or without oscillation
- Uses Rigid or Semi-flexible track for use on ferrous and non-ferrous materials • Accepts MIG torches with diameters of 16 - 22mm • Closed loop speed control system • 0 - 1200mm/min horizontal speed • 5000mm minimum pipe concave or convex radius • Very wide range of tracks & accessories available to customise the machine to the job • Some components shown in image are sold separately, see website for list of included components: www.itmtools.com.au (WA-RAILBULL)

**\$7195**



## RAIL BULL 2 TRACK MOUNTED FILLET WELDING CARRIAGE

- All the features of WA-RAILBULL but with remote pendant control and modular upgrade design. Also can be used with Ring Tracks and Hi-Flex Tracks, allowing use on pipe 200mm OD to 3050mm OD • Produces consistent high quality welds and cuts in a fraction of the time required by manual operations • Very wide range of tracks & accessories available to customise the machine to the job • Optional programmable automatic seam trackers • Some components shown in image are sold separately, see website for list of included components: itmtools.com.au (WA-RAILBULL2)

**\$12460**





★ **ON SALE** ★

**\$395**

NORMALLY \$449

## 2" HYDRAULIC PIPE BENDER

- 1/2", 3/4", 1", 1-1/4", 1-1/2", 2" cast steel formers
  - 0° to 90° Bending angle • 13,000kg Force capacity
  - 250mm Stroke • Heavy duty castor wheels
- (TM811-13050)

**\$849**

## 3" HYDRAULIC PIPE BENDER

- 1/2", 3/4", 1", 1-1/4", 1-1/2", 2", 2-1/2", 3" formers
  - 0° to 90° Bending angle • 20,000kg Force capacity
  - 290mm Stroke • Heavy duty castor wheels
- (TM811-20075)

**\$1299**

## 4" HYDRAULIC PIPE BENDER

- 1/2", 3/4", 1", 1-1/4", 1-1/2", 2", 2-1/2", 3", 4" formers
  - 0° to 90° Bending angle • 20,000kg Force capacity
  - 370mm Stroke • Heavy duty castor wheels
- (TM811-20100)

**\$2195**

## BM-7 COMPACT PLATE & PIPE BEVELLER

- Plate and pipe bevelling machine for bevelling steels and plastic, using carbide inserts
  - 1100W, 240V motor
  - 7mm maximum bevel width, 45° angle
  - Optional milling head for 30° angle
  - Optional radius insert sizes R2 to R5
  - 5.8kg
  - Cutting inserts sold separately
- (BM7)



**\$3245**

## BM-16 PORTABLE BEVELLER

- Plate & pipe beveller • Produces burr free angled or radius bevels quickly and easily
- For milling steel, aluminium, brass or plastic • 22.5° to 65° working range and R2 to R5 radius edging depending on milling head (available separately) • 16mm maximum bevel width • 2200W 240V motor • 1800 - 5850rpm • 40mm countersinking min diameter • 10kg • Milling heads and carbide inserts sold separately (BM16)



**\$2320**

## BM-20 PLUS BEVELLER PLATE & PIPE BEVELLING MACHINE

- 2 Rotary milling heads each holding 5, 4-sided carbide inserts
- 15 to 60° working range
- 21mm maximum bevel width
- 1600W 240v induction motor
- 3340rpm
- 20.5kg (BM20+)



**\$3295**

## BM-21 BEVELLER PLATE & PIPE BEVELLING MACHINE

- Newly designed single milling head with 10 square inserts which is fast & easy to set up
- Low vibration model
- 0 to 60° working range
- Face grinding at 0°
- 21mm maximum bevel width
- Universal guide system also bevels pipe 150 - 300mm diameter
- 1600W 240v induction motor
- 2800rpm • 21kg (BM21)



**\$9995**

## ABM-14 PLATE & PIPE BEVELLING MACHINE

- Bevel plate and pipe made of mild steel, alloy steel, stainless steel or aluminum alloys
- Auto feed on large plates with optional trolley
- 2.6 m/min maximum auto bevel speed
- 14mm maximum bevel width
- 30° standard bevel angle, optional angle variation devices for 22.5°, 25°, 35°, 37.5° & 45°
- 100mm Minimum pipe ID • 2200W 415V motor
- Low noise 70dB • Weight 65kg (ABM14)



**\$29995**

## ABM-50 AUTO FEED DOUBLE SIDED BEVELLER

- Automatic feed beveller
- 50mm max. bevel width
- 15 to 60° bevel angle
- 6mm maximum depth per pass
- 8 to 80mm Plate thickness
- 180° inversion allows for creation of a double-sided bevel - no need to rotate or flip heavy material reduces material handling costs and improves shop safety
- Variable spindle speed for work on a variety of steel grades and thicknesses
- LCD display that displays and controls exact bevel geometry (ABM50)



## INDUSTRIAL SERIES COMPRESSOR FEATURES

- Durable copper wound motors
- Full brass non-return valve
- Soft start valve
- Condor pressure switches
- 145psi (10 Bar) maximum pressure
- AS1210 Approved tanks
- Thermal overload protection
- Includes filter regulator with one-touch "Nitto style" couplers
- 200mm Solid rubber wheels
- 3 year pump warranty



**\$499**

### 2.5HP DIRECT DRIVE AIR COMPRESSOR

- Ideal builder's compressor • Single cast iron cylinder pump with aluminium head • Filter regulator • 240v 10amp
- Large 50L tank • FAD 175 L/min (TM350-25050)



**\$699**

### 2.2HP BELT DRIVE AIR COMPRESSOR

- Ideal builder's compressor • V Twin cast iron cylinder pump with aluminium heads • Filter regulator • 240v 10amp
- Large 50L tank • FAD 185 L/min (TM351-22050)



**\$849**

### 2.5HP BELT DRIVE AIR COMPRESSOR - 60L

- V Twin cast iron cylinder pump with aluminium heads
- Filter regulator • 240v 10amp • Large 60L tank
- FAD 257 L/min (TM351-25060)



**\$999**

### 2.5HP BELT DRIVE AIR COMPRESSOR - 90L

- V Twin cast iron cylinder pump with aluminium heads
- Filter regulator • 240v 10amp • Large 90L tank
- FAD 257 L/min (TM351-25090)



**\$999**

### 3HP BELT DRIVE AIR COMPRESSOR - 50L

- Ideal for commercial applications • Cast iron cylinder pump with aluminium head • Filter regulator • Large 50L tank
- FAD 318 L/min • 240v 15amp (TM351-30050)



**\$1199**

### 3HP BELT DRIVE AIR COMPRESSOR - 60L

- Ideal for commercial applications • Triple cast iron cylinder pump with aluminium heads • Filter regulator
- 60L tank • FAD 328 L/min • 240v 15amp (TM351-30060)



**\$1299**

### 3HP BELT DRIVE AIR COMPRESSOR - 90L

- Ideal for commercial applications • Triple cast iron cylinder pump with aluminium heads • Filter regulator
- 90L tank • FAD 328 L/min • 240v 15amp (TM351-30090)

- ★ **BONUS ITEM** ★
- 30M HOSE REEL
- 8mm I.D. Braided PU hose • \$199 Value (TM300-030)



**\$1799**

### 5.5HP PETROL BELT DRIVE AIR COMPRESSOR - 60L

- Powered by Honda GX160 5.5HP engine • HD cast iron cylinder with aluminium head • Filter regulator • Large 60L tank
- FAD 355 L/min (TM352-55060)



**\$2699**

### 5.5HP 3 PHASE, 200L STATIONARY AIR COMPRESSOR

- Ideal for commercial workshops • Twin cast iron cylinder pump with aluminium head • Soft start • Large 200L tank
- FAD 507 L/min (TM353-55200)



**\$3499**

### 7.5HP 3 PHASE, 270L STATIONARY AIR COMPRESSOR

- Ideal for commercial workshops • Triple cast iron cylinder pump with aluminium head • Soft start • Large 270L tank
- FAD 704 L/min (TM353-75270)



**\$3899**

### 10HP 3 PHASE, 270L STATIONARY AIR COMPRESSOR

- Ideal for commercial workshops • Triple cast iron cylinder pump with aluminium head • Soft start • Large 270L tank
- FAD 1143 L/min (TM353-10270)



## TRADE SERIES COMPRESSORS

**\$279**

### 2.5HP, 36L DIRECT DRIVE AIR COMPRESSOR

- Single cylinder oil lubricated pump • FAD : 135 L/min
- Max Pressure : 116 PSI (8 Bar)
- Solid rubber wheels • Regulated outlet with one-touch "Nitto style" connector (TM354-25036)



**\$599**

### 2.2HP, 50L BELT DRIVE AIR COMPRESSOR

- V Twin cast iron cylinder pump • FAD : 170 L/min
- Max pressure : 116 PSI (8 Bar) • Solid rubber wheels
- Regulated outlet with one-touch "Nitto style" connector (TM354-22050)



## FILTER REGULATORS

- Sintered bronze filter element
- Max input pressure 175 PSI
- Max output pressure 145 PSI
- 80mL drain capacity
- Includes mounting bracket

Part No.	Description	Price
TM340-012	• 1/4" Port • Semi-auto drain • 1750 l/min max flow	\$59.90
TM340-014	• 1/2" Port • Automatic drain • 3000 l/min max flow	\$99.00



**\$139**

### 15M HOSE REEL

- Reinforced PVC air hose • Auto retractable • Auto lock to any length • Auto track guided hose laying system • Hose length: 15m • Hose I.D.: 10mm (3/8") (TM300-015)



**\$159**

### 20M HOSE REEL

- Hybrid high-flex air hose • Anti-kink technology
- Auto lock to any length • Auto retractable • Hose length: 20m • 10mm (3/8") • Hi-visibility for safety (TM300-020)



**\$199**

### 30M HOSE REEL

- Braided PU hose • Manual rewind • Heavy duty steel frame • Kink-proof collar on hose • Hose length: 30m • Hose I.D.: 8mm (TM300-030)



## PVC AIR HOSES - UNFITTED

- Durable PVC • Grease, oil & abrasion resistant
- Non-marking • Max pressure: 300 PSI

Description	Part No.	Price
20M 3/8" I.D.	TM300-120	\$37
30M 3/8" I.D.	TM300-130	\$52



## PVC AIR HOSES - FITTED

- Durable PVC • Grease, oil & abrasion resistant • Nitto style fittings • Kink proof collar • Max pressure : 300 PSI

Description	Part No.	Price
10M 3/8" I.D.	TM300-210	\$30
20M 3/8" I.D.	TM300-220	\$45
30M 3/8" I.D.	TM300-230	\$60



## HIGH-FLEX AIR HOSES

- Hybrid polymer High-Flex hose • Anti-kink technology, the hose will not kink when under pressure • Superior all weather flexibility -5°C to 65°C
- 300PSI maximum working pressure • Hi-visibility for safety

Description	Fitting	Part No.	Price
15M 3/8" I.D.	1/4" BSP	TM300-315	\$49
30M 3/8" I.D.	1/4" BSP	TM300-330	\$79



## BULK PVC AIR HOSE

- Durable PVC • Max pressure: 300 PSI
- Hose I.D.: 10mm (3/8")
- No fittings or collar

Description	Part No.	Price
100M 3/8" I.D.	TM300-1100	\$130
200M 3/8" I.D.	TM300-1200	\$250



## BULK HIGH-FLEX AIR HOSE

- Hybrid polymer High-Flex hose • Anti-kink technology the hose will not kink when under pressure flexibility -5°C to 65°C • 300PSI max working pressure • No fittings or collar

Description	Part No.	Price
100M 3/8" I.D.	TM300-3100	\$300
100M 1/2" I.D.	TM300-4100	\$400
100M 3/4" I.D.	TM300-5100	\$650



**\$25**

### DIAL GAUGE TYRE INFLATOR

- BAR, PSI, KPA & KG/CM<sup>2</sup>
- 0 to 220 PSI range
- 1/4" BSP inlet (TM340-001)



**\$39**

### DIGITAL TYRE INFLATOR

- BAR, PSI, KPA or KG/CM
- 40cm Hose (TM340-002)

**\$49**



### SUCTION FEED GENERAL PURPOSE

• 2.0mm Nozzle • 1000mL Aluminium pot (TM340-901)

**\$69**



### SUCTION FEED PROFESSIONAL

• 1.4mm & 2.0mm Nozzles • 1000mL Aluminium pot (TM340-902)

**\$49**



### GRAVITY FEED GENERAL PURPOSE

• 2.0mm Nozzle • 600mL Plastic pot (TM340-903)

**\$79**



### GRAVITY FEED PROFESSIONAL

• 1.4mm & 2.0mm Nozzles • 600mL Plastic pot (TM340-904)

**Star**

### S770-S SERIES

• Pot size : 1000ml • Includes : Gun, pot, stainless steel nozzle and needle • A popular conventional high pressure spray gun that provides extremely fine atomisation for the D.I.Y. person to the professional



Nozzle Size	Spray Pattern	Part No.	Price
1.5mm	235mm	S770-11S	\$159
1.7mm	245mm	S770-21S	\$159
2.0mm	260mm	S770-31S	\$159
2.5mm	275mm	S770-41S	\$159
3.0mm	275mm	S770-51S	\$209

**Star**

### GRAVITY FEED SPRAY GUN

• Pot size : 600ml • Includes : Gun, pot, stainless steel nozzle and needle • Provides constant paint flow at lower pressures, and extremely fine atomisation



Nozzle Size	Spray Pattern	Part No.	Price
1.4mm	250mm	S106-141G	\$189
2.0mm	270mm	S106-201G	\$189
2.5mm	270mm	S106-251G	\$205
2.8mm	270mm	S106-281G	\$205

**Star**

**\$139**

### TOUCH UP GUN

Pot size : 250ml  
Nozzle size : 1.4mm  
Spray pattern : 120mm  
Includes : Gun, pot, stainless steel nozzle and needle  
• Ideal for custom designing, auto touch-up work, detail spray work and stencil spraying (SJ108)



**BONUS ITEM**

**1/2" DRIVE IMPACT SOCKET SET - 11PC**  
• \$59.00 Value (TM371-001)



**\$179**

### COMPOSITE IMPACT WRENCH 1/2" DRIVE

• Aluminium composite material construction • Heavy duty twin hammer • 3 torque settings • 820 Nm (625 ft-lb) Max torque • 6,800rpm Free speed • 190 L/min Average air consumption (TM340-136)



**\$399**

### COMPOSITE IMPACT WRENCH 3/4" DRIVE

• Aluminium composite material construction • Heavy duty twin hammer • 3 torque settings • 1,200 Nm (885 ft-lb) Max torque • 4,200rpm Free speed • 190 L/min Average air consumption (TM340-145)



**\$159**

### HYDRAULIC RIVETER

• Sets rivets up to 6.4mm steel and 4.8mm stainless steel • Traction Power: 3,086lb (1400kg) • Stroke Length: 16mm (TM340-802)



**\$49**

### DIE GRINDER

• Compact design • Rear 4 speed regulator • Length: 173mm • Free speed: 25,000rpm (TM340-312)



**\$89**

### AIR DRILL 3/8" DRIVE

• Quick change keyless chuck • Adjustable auxiliary handle • Free speed: 2,200rpm (TM340-724)



**\$99**

### AIR DRILL 1/2" DRIVE

• Quick change keyless chuck • Adjustable auxiliary handle • Free speed: 700rpm (TM340-734)



**\$69**

### AIR HAMMER KIT

• Includes 5pc chisel kit • Blows per minute: 3000bpm • Stroke: 66mm (TM340-404)



**\$99**

### NEEDLE SCALER

• Heavy duty metal construction • Blows per minute: 2800 • Stroke: 24mm • Length: 315mm (TM340-414)





**\$178**

### 3/8" IMPACT WRENCH

- Butterfly style • 0.8KG Weight • 92.1DB Noise level
- 159mm length • 100Nm (75ft-lb) Max torque • 10mm Bolt capacity • 2.5 CFM Air consumption (M7-NC3410)



**\$375**

### 3/8" MINI IMPACT WRENCH

- Lightweight - Only 1.5KG! • Low noise level - Only 85DB! • Compact size - Only 115.5mm length!
- Powerful - 470Nm (350ft-lb) Max torque! • 13mm Bolt capacity • 4.4 CFM Air consumption (M7-NC3610Q)



**\$319**

### 1/2" MINI IMPACT WRENCH

- Lightweight - Only 1.6KG! • Low noise level - Only 85DB! • Compact size - Only 115.5mm length! • Powerful - 500ft-lb Max torque! • 16mm Bolt capacity • 4.4 CFM Air consumption (M7-NC4610Q)



**EASY GREASE ANVIL SERIES**

**\$395**

### 1/2" IMPACT WRENCH

- Lightweight - Only 1.7KG!
- Powerful - 1650Nm (1200ft-lb) Max Torque! • Value For Money - High quality & specs • 25mm Bolt capacity • 4.8 CFM Air consumption • Magnesium composite body (M7-NC4255QH)



**\$455**

### 1/2" IMPACT WRENCH

- Lightweight - Only 1.8KG!
- Compact size - Only 141mm length!
- Powerful - 1500Nm (1100ft-lb) Max torque! • 25mm Bolt capacity • 5.1 CFM Air consumption • Extra heavy duty twin hammer (M7-NC4256Q)



**\$629**

### COMPACT METAL BODY 3/4" IMPACT WRENCH

- Lightweight - Only 2.68KG!
- Low noise level - Only 83DB!
- Powerful - 1650Nm (1200ft-lb) Max torque! • Compact - Only 171mm length • 25mm Bolt capacity • 5.5 CFM Air consumption (M7-NC6236Q)



**EASY GREASE ANVIL SERIES**

**\$629**

### COMPACT 3/4" IMPACT WRENCH

- Lightweight composite body - Only 1.9KG! • Low noise level - Only 85DB! • Powerful - 1900Nm (1400ft-lb) Max torque! • Compact - Only 198mm Length • 25mm Bolt capacity • 4.8 CFM Air consumption (M7-NC6255QH)



**\$969**

### SUPER DUTY 3/4" IMPACT WRENCH

- Lightweight - Only 3.0KG!
- Low noise level - Only 88DB!
- Powerful - 2000Nm (1500ft-lb) Max torque! • Super Duty - Designed for the commercial tyre industry • 30mm Bolt capacity • 5.9 CFM Air consumption (M7-NC6266)



**\$1489**

### 3/4" IMPACT WRENCH

- 2000Nm (1500ft-lb) Max torque! • 27mm Bolt capacity • 6.34 CFM Air consumption • 320mm Overall length • 5.7KG • 106dB Sound pressure (M7-NC6218)



**\$1189**

### 1" IMPACT WRENCH

- Powerful - 2000Nm (1500ft-lb) Max torque! • 5KG Weight • 92DB Noise level • 30mm Bolt capacity • 5.4 CFM Air consumption (M7-NC8217)



**\$2175**

### 1" IMPACT WRENCH

- 3650Nm (2710ft-lb) Max torque! • Lightest 2500+ ft-lb impact wrench in the world • Mighty spring in the cylinder increases the air efficiency • 39.7mm Bolt capacity • 15.9 CFM Air consumption • 370mm Overall length • 100dB Sound pressure • 11KG (M7-NC8382)



**\$2325**

### 1" IMPACT WRENCH

- 3650Nm (2710ft-lb) Max torque! • Lightest 2500+ ft-lb impact wrench in the world • Mighty spring in the cylinder increases the air efficiency • 39.7mm Bolt capacity • 15.9 CFM Air consumption • 570mm Overall length • 100dB Sound pressure • 12.5KG (M7-NC8382-8)



**\$6860**

### 1-1/2" IMPACT WRENCH

• 4750Nm (3500ft-lb) Max torque! • 2" (50mm) Bolt capacity • 19.7kg Weight • 104.5 dBA Noise • Available with 8" anvil (M7-NC9223)



### MINI RATCHET WRENCHES

• Max torque at 5 seconds : 30Nm (22 ft-lb) • Net weight : 0.5kg • Overall length : 125mm

M7-NE251R  
1/4" drive  
**\$189**

M7-NE351R  
3/8" drive  
**\$200**



### RATCHET WRENCHES

• Max torque at 5 seconds : 80Nm (60 ft-lb) • Net weight : 1.22kg • Overall length : 265mm

M7-NE332  
3/8" drive  
**\$189**

M7-NE432  
1/2" drive  
**\$195**



**\$59**

### 1/2" DRIVE IMPACT SOCKET SET

• 11 Piece 10, 12, 13, 14, 15, 17, 18, 19, 21, 22, 24mm • Chrome Molybdenum Steel (Cr-Mo), hardened and tempered (TM371-001)



**\$79**

### 1/2" DRIVE DEEP IMPACT SOCKET SET

• 11 Piece 10, 12, 13, 14, 15, 17, 18, 19, 21, 22, 24mm • Chrome Molybdenum Steel (Cr-Mo), hardened and tempered (TM371-002)



**\$139**

### 75MM AIR CORNER CUT OFF TOOL

Cutting wheel not included

• Free speed : 20000 RPM • Net weight : 0.8kg • Motor : 0.9 HP • Excellent for cutting rusted bolts, nuts, motor exhaust clamps or hangers, sheet metal, fibreglass etc. (M7-QC213)



### EXTRA HEAVY DUTY AIR ANGLE GRINDERS

• Free speed : 11000 RPM • Net weight : 1.81kg • Available with imperial or metric spindle sizes • Safety lever throttle • 1.3 HP motor for stall resistance • Reversible flange suitable for use with thin cut off wheels • One piece housing reduces maintenance costs • Heavy duty air cooled spiral gears and double bearings for durability

**100° ANGLE**



M7-QB7114M  
100mm Diameter  
M10 x 1.5 Spindle  
**\$470**

M7-QB7245M  
112mm Diameter  
M14 x 2.0 Spindle  
**\$485**

M7-QB7215M  
125mm Diameter  
M14 x 2.0 Spindle  
**\$495**

Grinding wheel not included



### LEVER THROTTLE AIR ANGLE GRINDERS

• Free speed : 11000 RPM • Spindle size : 3/8"-24 • Net weight : 1.81kg • Safety lever throttle • 0.78HP motor for stall resistance



M7-QB114  
100mm Diameter  
**\$395**

M7-QB115  
125mm Diameter  
**\$395**

Grinding wheel not included



M14x2.0 spindle version also available M7-QB197QM

**\$1050**

### 180MM AIR ANGLE GRINDER

• Free speed : 7000 RPM • Spindle size : 5/8"-11 • Net weight : 3.1kg • Extra heavy duty • Safety lever throttle • 2.2HP motor • Extra quiet 77 dBA (M7-QB197Q)



**\$679**

### 75MM AIR WET GRINDER

• Free speed : 4500 RPM • Spindle size : 5/8"-11 • Water hose length : 3m • Air hose length : 3m • Net weight : 2.2kg • Valve throttle type (M7-QB603)



Grinding wheel not included

**\$295**

### 50MM MINI AIR ANGLE GRINDER

• Free speed : 19000 RPM • Rated power : 0.4 HP • Net weight : 0.52kg • Mini size, only 160mm length • Comes with sanding pad (M7-QB623)





**\$269**  
**AIR HYDRAULIC RIVETER**

- Traction power: 2303 lbf
- Alloy rivet : 3/16" • Steel rivet : 3/16" • Stainless rivet : 5/32"
- Stroke length: 16mm • Net weight: 1.5kg (M7-PA301)



**\$605**  
**AIR HYDRAULIC RIVETER**

- Traction power : 3534 lbf • Alloy rivet : 1/4" • Steel rivet : 1/4" • Stainless rivet : 3/16" • Stroke length : 14mm • Net weight : 1.8kg (M7-PA201)



**\$999**  
**AIR HYDRAULIC RIVETER**

- Traction power : 3748 lbf
- Alloy rivet : 1/4" • Steel rivet : 1/4" • Stainless rivet : 1/4"
- Stroke length : 18mm • Net weight : 1.75kg (M7-PA211)



**\$980**  
**AIR HYDRAULIC RIVET NUT TOOL**

- Traction power : 3638 lbf
- Stroke length : 9mm • Net weight : 1.5kg • Comes with mandrel sizes : M4, M5, M6, M8 & M10 • Suitable for use with : Steel M4 - M10, Stainless steel M4 - M8 (M7-PB2402)



**\$102.50**  
**RIVETER ATTACHMENT**

- Nose Piece : 3/32" (2.4mm), 1/8" (3.2mm), 5/32" (4.0mm), 3/16" (4.8mm) • Net Weight : 0.3kg • Hex Shank : 1/4" • For use with 3/8" cordless drills (M7A-PA9048P)



**\$156.50**  
**RIVET NUT ATTACHMENT**

- Nose Piece : M3, M4, M5, M6
- Net Weight : 0.28kg • Hex Shank : 1/4" • For use with 3/8" cordless drills • (M7A-PB9006P)



**\$415**  
**AIR BELT SANDER 20 X 520MM**

- Free speed : 16000 RPM • Net weight : 1.40g (M7-QB322)



**\$195**  
**AIR HAMMER SET**

- Blows per minute : 3200 BPM • Shank : Round 10.2mm • Air hammer (M7-SC211C) • 5pcs Chisel kit • Spring retainer (M7-SC0517C)

Chisels supplied separately :  
Blade chisel (M7A-SN9201) \$42  
Point chisel (M7A-SN9203) \$42



**AIR CHIPPING HAMMERS**

- Hex shank • Shank size : 0.58" (15mm) • Forged steel body provides industrial level quality and durability

Blows Per Minute	Stroke Length	Overall Length	Part No.	Price
2300	78mm	373mm	M7-SN3222	\$939
1900	119mm	419mm	M7-SN3223	\$1010
1700	142mm	142mm	M7-SN3224	\$1290



**\$165**  
**3/8" AIR DRILL**

- Chuck size : 3/8" • Free speed : 1800 RPM • Air requirement : 4.0CFM
- Length : 185mm • Sound pressure : 83DB • Net weight : 1.1kg • Quiet operation • Keyless chuck • Reversible (M7-QE831)



**\$269**  
**1/2" AIR DRILL**

- Chuck size : 1/2" • Free speed : 800 RPM • Air requirement : 4.0CFM
- Length : 210mm • Sound pressure : 83DB • Net weight : 1.7kg • Quiet operation • Keyless chuck • Reversible (M7-QE841)



**\$275**  
**AIR SAW SET**

- Stroke length : 10mm • Quick change saw blade holder
- 5 piece file set and 12 saw blades are included
- Adjustable guard / guide controls depth of cut precisely
- Air saw tool • 6x 24T saw blades • 6x 32T saw blades
- Allen key: 4mm, 3mm • File set • Mini oiler 1/4" (M7-QD291N)



### MINI AIR DIE GRINDER

• Free speed : 25000 RPM • Rated power : 0.3 HP  
• Length : 155mm • Net weight : 0.38kg

M7-QA111A  
Collets : 6mm & 3mm

**\$129**

M7-QA111B  
Collets : 1/4" & 1/8"

**\$129**



**\$159**

### AIR DIE GRINDER

• Collets : 1/4" & 1/8" • Free speed : 20000 RPM • Rated power : 0.9 HP • Length : 190mm • Net weight : 0.65kg  
• Heavy duty model (M7-QA211B)  
• Die grinder with 6mm collet also available



### 90° ANGLE HEAD AIR DIE GRINDER

• Collets : 1/4" & 1/8" • Head height : 73mm • Free speed : 19000 RPM • Rated power : 0.3 HP • Net weight : 0.51kg (M7-QA611B)

**\$185**



**\$232**

### EXTENDED AIR DIE GRINDER

• Length : 235mm • Collets : 1/4" & 1/8" • Free speed : 25000 RPM • Rated power : 0.3 HP • Net weight : 0.58kg (M7-QA313B)



**\$249**

### EXTENDED AIR DIE GRINDER

• Length : 280mm • Collets : 1/4" & 1/8" • Free speed : 25000 RPM • Rated power : 0.3 HP • Net weight : 0.63kg (M7-QA315B)



**\$189**

### AIR ENGRAVING PEN

• Blows per minute : 13000 BPM • Net weight : 0.23kg (M7-QA511)



**\$92**

### CLEANING GUN - FLEXIBLE HOSE

• Capacity : 1L • Net weight : 0.47kg • Suitable for applying degreasant and cleaning agents • Lance with adjustable nozzle with cone (M7-SX3202)



**\$77**

### ENGINE CLEANING GUN

• Cup capacity : 1L • Net weight : 0.5kg • Composite body (M7-SX1615)



**\$82.50**

### GRIT BLASTING GUN

• Capacity : 1L • Net weight : 0.57kg • For removing rust, old paint and ingrained dirt etc. • Adjustable nozzle • Hanger hook (M7-SX3101)



**\$82.50**

### WONDER GUN

• Vacuum level : 7.5mmHg • Net weight : 0.67kg  
• Can be used as blow gun or air vacuum gun • Use for suction of dust, wood chips, metal shavings, glass etc. • 6 piece set (M7-WG202)



**\$279**

### AIR SAUSAGE CAULKING GUN

• Capacity : 600ml sausage • Net weight : 1.21kg (M7-SK1131)



**\$78.50**

### AIR CAULKING GUN

• Net weight : 1.1kg • Ergonomic design for comfortable operation (M7-SK1010)





**\$286**

### AIR FLUX CHIPPER

• Blow per minute : 4000 BPM • Shank size : Square 0.510" (13mm) • Net weight : 1.33kg (M7-SN1032)



**\$450**

### AIR PISTOL NEEDLE SCALER

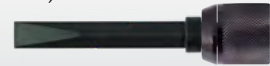
• Blows per minute : 3700 BPM • Net weight : 2.8kg • Needle size : 3 x 180mm (19 per set) • Overall length : 330mm (M7-SN2110)



**\$235**

### AIR NEEDLE SCALER

• Blows per minute : 5500 BPM • Net weight : 1.3kg • Needle size : 3 x 123mm (12 per set) • Overall length : 290mm (M7-SN1288)



### CHISEL ATTACHMENT

• For use with M7-SN1288 Air Needle Scaler • Includes nut, chisel and spring (M7A-SN1288CHKIT)

**\$73**



**\$825**

### AIR PISTOL NEEDLE SCALER

• Blows per minute : 4000 BPM • Net weight : 3.6kg • Needle size : 3 x 180mm (24 per set) • Springless design for superior performance (M7-SN2124)



**\$925**

### AIR PISTOL NEEDLE SCALER

• Blows per minute : 3500 BPM • Net weight : 2.8kg • Needle size : 3 x 180mm (28 per set) • Springless design for superior performance (M7-SN2128)



### SPRING BALANCERS

• The spring balancers will retract when released and tension will be higher the longer the wire is dragged out. The balancer is equipped with an automatic safety drum lock in case of spring failure.

Capacity	Travel Length	Cable Diamater	Part No.	Price
0.3 - 0.85kg	1.6m	2.5mm	M7-SP101	\$63.00
0.6 - 1.5kg	1.6m	2.5mm	M7-SP102	\$63.00
1.0 - 2.0kg	1.6m	2.5mm	M7-SP103	\$63.00
1.5 - 3.0kg	1.5m	3.2mm	M7-SP104	\$96.50
3.0 - 5.0kg	1.5m	3.2mm	M7-SP105	\$116.50



**\$86.50**

### AIR GREASE GUN MANUAL PULSE TYPE

• Capacity : 450g cartridge or 500g bulk • Net weight : 1.46kg • Bulk & cartridge type (M7-SG500)



**\$200**

### AIR GREASE GUN CONTINUOUS FULLY AUTOMATIC TYPE

• Capacity : 450g cartridge or 500g bulk • Working pressure : 40 - 90psi • Output volume : 288ml/min • Net weight : 1.6kg • Bulk & cartridge type • Heavy duty cast aluminium body for maximum durability • Includes 305mm flexible hose (M7-SG501)



### SPIRAL SPRING BALANCERS

• Features a sturdy metal casing

Capacity	Travel Length	Cable Diamater	Part No.	Price
5 - 9kg	1.3m	4.0mm	M7-SP3090	\$475
9 - 15kg	1.3m	4.0mm	M7-SP3150	\$515
15 - 22kg	1.5m	4.8mm	M7-SP3220	\$1,020
22 - 30kg	1.5m	4.8mm	M7-SP3300	\$1,100
30 - 40kg	1.5m	4.8mm	M7-SP3400	\$1,659
40 - 50kg	1.5m	4.8mm	M7-SP3500	\$1,755
50 - 60kg	1.5m	4.8mm	M7-SP3600	\$1,875
60 - 70kg	1.5m	4.8mm	M7-SP3700	\$2,015



**\$859**

### SAND RAMMER

• Rubber butt diameter : 40mm • Stroke : 60mm • Length : 337mm • Weight : 2.1kg (B00A)



**\$1619**

### SAND RAMMER

• Rubber butt diameter : 70mm • Stroke : 120mm • Length : 1134mm • Weight : 9.0kg (F2)

## INDUSTRIAL WORKSHOP FANS

- Quality robust construction designed for everyday use in industrial workshops
- Zinc coated mesh
- Powder coated steel frame
- High output & quiet running
- 3 speed motor
- Oscillating function

**\$159**

600mm diameter  
Pedestal Fan (TPF24)

TPF30



**\$165**

750mm diameter  
Pedestal Fan (TPF30)

TWF30



**\$159**

750mm diameter  
Wall Mount Fan (TWF30)



★ **ON SALE** ★

**\$499**

NORMALLY \$689!!

**LIMITED STOCK**

### 1/2" IMPACT WRENCH 41 PIECE KIT

- 1/2" Impact wrench 1680Nm, 1.7KG (M7-NC4255QH)
- 1/2" Torque wrench 42-210Nm
- 250mm Blow gun (M7-JC310)
- Mini lubricator
- 75mm & 125mm Extension bars
- 1/2" Universal joint
- 1/2" Impact socket set 10, 11, 12, 13, 14, 15, 16, 17, 18, 19, 21, 22, 24, 27, 30, 32mm
- 1/2" Impact deep socket set 10, 11, 12, 13, 14, 15, 16, 17, 18, 19, 21, 22, 24mm
- 1/2" Impact wheel nut sockets 17, 19, 21mm (M7-NC4255Q-41KIT)

★ **ON SALE** ★

**\$1699**

NORMALLY \$1899

### 8.1KVA PETROL GENERATOR

- 15HP 4 stroke engine
- Max watts: 6500W
- Sine wave tech (THD<5%)
- Residual current device (RCD)
- 2 x IP66 outlets
- Large 25L fuel tank
- Push button electric start with remote control (TM520-6500)



★ **BONUS ITEM** ★



### 1/2" DRIVE IMPACT SOCKET SET - 11PCE

- \$59.00 Value (TM371-001)

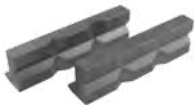


**\$179**

### COMPOSITE IMPACT WRENCH 1/2" DRIVE

- Aluminium composite material construction
- Heavy duty twin hammer
- 3 torque settings
- 820 Nm (625 ft-lb) Max torque
- 6,800rpm Free speed
- 190 L/min Average air consumption (TM340-136)

★ **BONUS ITEM** ★



### MAGNETIC VICE JAWS

- Aluminium prism face
- \$19.95 Value (TM121-150)

**\$299**

### 150MM FABRICATED STEEL BENCH VICE

- Offset jaw
- Precision machined knurled jaws with V-Groove
- Large diameter screw
- Extra heavy-duty
- Precise sliding jaw
- 25kg (TM104-150)



★ **ON SALE** ★

**\$395**

NORMALLY \$449

### 2" HYDRAULIC PIPE BENDER

- 1/2", 3/4", 1", 1-1/4", 1-1/2", 2" cast steel formers
- 0° to 90° Bending angle
- 13,000kg Force capacity
- 250mm Stroke
- Heavy duty castor wheels (TM811-13050)

Products imported and distributed nationally by Industrial Tool & Machinery Sales. Advertised prices include GST. Freight charges may apply on some products to some areas. Prices and specifications subject to change without notice.

OFFER VALID TO 29th February 2020